



LANDSCAPE®

OLD WORLD CRAFTSMANSHIP...TOMORROW'S TECHNOLOGY®



BEAUTIFUL | DURABLE | INNOVATIVE | TIMELESS

"TIMELESS DESIGNS, UNMATCHED QUALITY"





**BUILT
TO
LAST**

OUR PROMISE

You will not find a landscape lighting system that offers more durability, performance or value.

We guarantee that a CAST Lighting system designed and installed by a trained professional will transform your nighttime experience and age gracefully with your landscape.



David Beausoleil, Founder & CEO

Table of Contents

1	CAST Lighting's Vision
2	Why Choose CAST
7	CAST Lighting Fixtures
28	Bluetooth Color Control
45	Architects and Designers
46	CAST Transformers
47	CAST No-Ox® Wire
48	Quick Product Reference Guide
49	Quick Accessories Reference Guide



Visit the CAST Lighting website for valuable information and resources: www.cast-lighting.com.



CAST LANDSCAPE®

CAST Lighting provides the highest quality products with the greatest value to every customer. We advance the art and science of landscape lighting through research, training, and hands-on support.

The main difference between CAST Lighting and other manufacturers is our commitment to quality, durability, and service, resulting in the highest levels of customer satisfaction.

We are proud to produce over 65% of our products here in the United States. Visit our website to learn more.

WHY CHOOSE CAST?



“ I selected CAST because I wanted lighting that was durable and that matched the natural beauty of my landscape. ”

BEAUTY

Purchasing a landscape lighting system is like commissioning a work of art. The lighting designer employs skill and experience to paint the scene with light. CAST luminaires deliver this light and are, themselves, beautiful additions to your landscape.

INNOVATION

While other manufacturers cut costs by replicating existing products and outsourcing production to Asia, CAST Lighting continues to innovate and design bronze products right here in the United States. CAST products are produced by workers skilled in the ancient art of sand-casting. With this commitment to integrating the old and the new, CAST continues to push the envelope of quality, durability, performance, and design.

DURABILITY

CAST Lighting luminaires and system components are unquestionably the most rugged and durable products on the market, especially in the coastal environment. Most other manufacturers use inferior materials unsuited for outdoor applications that fail within a few years. CAST Lighting fixtures are constructed of solid bronze and heavy-duty copper that are built to last forever. Our products age gracefully with your landscape as the years pass, think copper gutters and the statue of liberty.

TIMELESS

David Beausoleil, Founder and CEO, is a visionary who works closely with lighting designers and engineers to develop innovative and timeless pieces that deliver glare free illumination. The best lighting designers understand the elimination of glare is the make or break for every project. Tools for the professional, inspired by nature. Every thoughtful design delivers exceptional lighting that effortlessly blends into and enhances the beauty of your landscape.

Lifetime Warranty on all CAST Landscape Fixtures

SOLID SAND-CAST BRONZE: UNMATCHED QUALITY



WHY SOLID BRONZE?

The outdoor landscape is a harsh environment. Lighting fixtures must endure heat and cold, moisture and drought, rain and snow, acid and alkaline soils, and all sorts of physical and chemical abuse. Bronze is the only metal that withstands these challenges. Bronze never corrodes, chips, cracks, or breaks. It is also the most beautiful metal, aging naturally to a fine patina, blending gracefully into the landscape.



THE PATINA PROCESS



Bronze, cast in sand, results in a distinctive textured surface that withstands physical and chemical abuse better than any other metal.

CAST Solid Bronze luminaires proceed through a process of color changes. The bare metal darkens to an old penny brown then finally patinas to a bluish-green. The process proceeds rapidly in wet, salty environments and more slowly in dry climates. The process can be accelerated or stopped through chemical treatments.





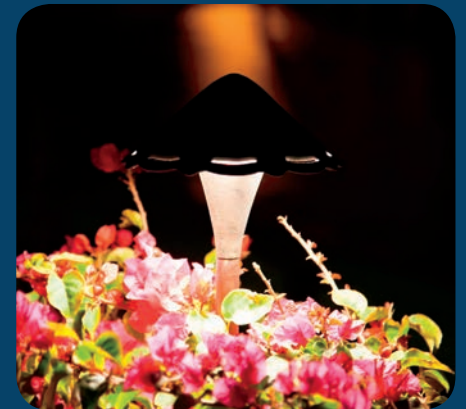
The Professional's

EXCELLENCE FROM THE START

Behind the rugged exterior of CAST Lighting products are a host of features and components designed for:

- ▶ Ease of Installation
- ▶ Durability
- ▶ Performance
- ▶ Safety & Security
- ▶ Lifetime Value
- ▶ Beauty

"CAST LIGHTING IS COMMITTED TO THE HIGHEST LEVELS OF EXCELLENCE FROM DESIGN TO MACHINING & ASSEMBLY. NO OTHER BRAND CAN COMPETE WITH THIS PRODUCT LINE."



Choice





**MR-16 Bullet Light
CBL1CB**

Design Tip

Projecting light through plant material creates dynamic and compelling shadows on surfaces that might otherwise appear flat or uninteresting.

CAST SOLID BRONZE MR-16 BULLET LIGHT

The workhorse of the landscape lighting designer and the industry's most rugged MR-16 directional light. Virtually unbreakable and highly adjustable, it's ideal for uplighting plants, trees, statuary, fences, and walls.

FEATURES

- ▶ Solid bronze shroud, body, and stake
- ▶ Extra-long 360° adjustable shroud for maximum light control
- ▶ Convex lens prevents light-depleting mineral build-up
- ▶ High-temperature socket
- ▶ Seamless 180° knuckle for precise adjustment
- ▶ Fully assembled
- ▶ Pre-wired with 25', #16-2 No-Ox[®] tin-coated marine-grade wire
- ▶ Uses MR-16 lamp (not included)
- ▶ Lifetime Bronze Casting Warranty, UL Listed

ACCESSORIES:

Mounting Canopy (CFM1CBS), Riser Pipe Extensions



**CBL1CB
CBL1CBUSA**

Also available in integrated CBLED141



CBLED141



Support USA manufacturing by purchasing model #CBL1CBUSA





MR-16 Area/Path Light
CBAL1CB

Design Tip

When lighting pools and other recreational areas, position luminaires so light does not shine into occupants' eyes.



We are proud to produce this model in the USA

CAST Solid Bronze MR-16 Area/Path Light

This stem-mounted directional light features the durability and adjustability of the CAST MR-16 Bullet. The extended height makes it ideal for use in planting beds or to illuminate wide paths and driveways.

FEATURES

- ▶ Solid bronze shroud, body, and stake
- ▶ Heavy-gauge copper stem
- ▶ Extra-long 360° adjustable shroud for maximum light control
- ▶ Convex lens prevents light-depleting mineral build-up
- ▶ High-temperature socket
- ▶ Seamless 180° knuckle for precise adjustment
- ▶ Fully assembled
- ▶ Pre-wired with 25', #16-2 No-Ox[®] tin-coated marine-grade wire
- ▶ Uses MR-16 lamp (not included)
- ▶ Lifetime Bronze Casting Warranty, UL Listed

ACCESSORIES:

Mounting Canopy (CFM1CBS), Riser Pipe.



CBAL1CB





MR-11 Bullet Light
CBL5CB

CAST Solid Bronze & Copper MR-11 Bullet Light

This compact and versatile directional light is the industry's most rugged MR-11 luminaire. Ideal for small niche applications such as under pergolas and gazebos, or illuminating statuary.

FEATURES

- ▶ Solid bronze, knuckle, and stake
- ▶ Heavy-duty copper shroud, fully adjustable
- ▶ Convex lens prevents light-depleting mineral build-up
- ▶ High-temperature socket
- ▶ Seamless 180° knuckle for precise adjustment
- ▶ Fully assembled
- ▶ Pre-wired with 25', #16-2 No-Ox[®] tin-coated marine-grade wire
- ▶ Uses MR-11 lamp (not included)
- ▶ Lifetime Bronze Casting Warranty, UL Listed

ACCESSORIES:

MR-11 Mounting Canopy (CFM1CBS), Riser Pipe Extensions



CBL5CB

Design Tip

Wide, even illumination of walls can be accomplished by strategic positioning of luminaires. Head-on illumination tends to flatten textured surfaces while grazing from an oblique angle will accentuate texture and allow wider coverage.





Tree Light
CCTL1C



We love trees and don't want to harm them. Each Tree Light is included with mounting hardware that offsets the mounting canopy 2.5" off the growing outer surface of the tree prevent rot or infestation.

CAST Solid Bronze & Copper Tree Light

This rugged and highly adjustable MR-16 directional luminaire is the industry's most durable tree light. Extra-long shroud reduces glare—ideal for creating a natural moonlight effect. Mounting hardware is offset from bark to prevent damage to the tree.

FEATURES

- ▶ Heavy-gauge extra-long copper shroud for maximum light control
- ▶ Shroud can be rotated a full 360°
- ▶ Double O-ring for weather-tight seal
- ▶ Solid bronze base with seamless 180° adjustable knuckle
- ▶ Fast mount canopy base offset from tree to prevent rot
- ▶ Pre-wired with 35', 16-2 No-Ox[®] tin-coated marine-grade wire
- ▶ Uses MR-16 lamp (not included)
- ▶ Lifetime Bronze Casting Warranty, UL Listed

ACCESSORIES:

Includes mounting hardware

Tree lights positioned above patios, decks or entrances naturally cast beautiful shadows, simulating moonlight. For best results, mount 20'- 25' above grade.







Solid Bronze Integrated LED Spotlight

CAST CRAFTSMAN Series Solid Bronze Integrated LED Spotlight

This compact and rugged spotlight is available in three lumen levels and beam configurations that blend seamlessly into residential property. Easy to install and adjust.

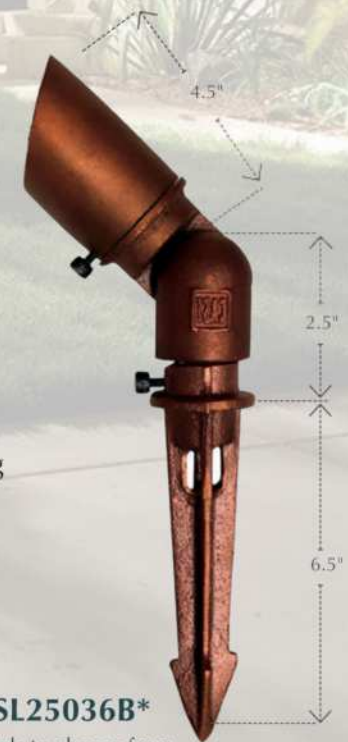
MODEL	LUMENS (LM) / BEAM ANGLE
CCSL10536B	105/36°
CCSL18336B	183/36°
CCSL18354B	183/54°
CCSL25036B	250/36°
CCSL25054B	250/54°
CCW105B	105/80°
CCW270B	270/80°

FEATURES

- ▶ Solid bronze shroud, body and stake
- ▶ 360° adjustable shroud for maximum light control
- ▶ Convex lens prevents light-depleting mineral build up
- ▶ Seamless 180° knuckle for precise adjustment
- ▶ Fully assembled
- ▶ Pre-wired with 5', #16-2 No-Ox[®] tin-coated marine-grade wire
- ▶ Quick connect top light engine feature for easy servicing and changing
- ▶ Lifetime Bronze Casting, Ten Year LED Warranty, UL Listed

ACCESSORIES:

Mounting Canopy (CFM1CBS) Riser Pipe Extensions, Replacement light engine modules available (see website)



CCSL25036B*

*7 models to choose from





Niche Light
CNL1CB

CAST Solid Bronze & Copper Niche Light

This compact and versatile luminaire features a solid bronze base, sturdy copper shroud, and internal reflector. The Niche Light is ideal for lighting under eaves, in entrance ways, or for highlighting architectural details.

Design Tip

Gazebos can be lit from the outside by projecting MR-16 Bullets onto the supporting structure. Inside illumination can be accomplished by affixing Niche Lights inside under eaves or from underneath the peak.

FEATURES

- ▶ Glare-free reflected light source
- ▶ Heavy-gauge copper housing
- ▶ Solid bronze internal base
- ▶ Removable internal reflector
- ▶ Bracket mounts from left, right or top
- ▶ Hand-tightened set screw for easy and secure adjustment
- ▶ Pre-wired with 25', #18-2 No-Ox[®] tin-coated marine-grade wire
- ▶ LED lamp included
- ▶ Lifetime Bronze Casting Warranty, UL Listed



CNL1CB





Wall Wash Light
CWW1CB

CAST Solid Bronze Wall Wash Light

This rugged and compact luminaire features a semi-spherical reflective bowl enclosed in a convex borosilicate lens. It provides direct and diffused illumination for walls and other large surfaces.

FEATURES

- ▶ Direct and reflected light source
- ▶ Borosilicate convex glass lens
- ▶ Solid bronze body and stake
- ▶ Heavy-gauge copper stem
- ▶ High temperature socket and internal wiring
- ▶ Pre-wired with 25', 16-2 No-Ox[®] tin-coated marine-grade wire
- ▶ Provided with S8 LED Lamp
- ▶ Lifetime Bronze Casting Warranty, UL Listed

ACCESSORIES:

Mounting Canopy (CFM1CBS)



CWW1CB

Design Tip

CAST Wall Wash Lights provide a wide even illumination that can be made more interesting by projecting the light through plant material.





Deck Light
CDL1CB

Cast Solid Bronze Deck Lights

These compact, rugged, and versatile lights are constructed of solid bronze and provide diffused and glare-free illumination. They can be mounted on walls, posts, and railings. Their resistance to corrosion makes them ideal for docks, piers, and bridges.

FEATURES

- ▶ Three models made of solid bronze bodies and mounting plates
- ▶ CDL2CB Drop-in LED Lamp (included) 25' #18-2 Lead
- ▶ CDL1CB Drop-in LED Lamp (included) W Frosted Lens 25' #18-2 Lead
- ▶ CDL1LED1 Integrated LED W Frosted Lens, 25' #18-2 Lead
- ▶ CCDL1B Craftsman Series Integrated Clear Glass Lens 5' #18-2 Lead
- ▶ CCDL1BFG Craftsman Series Integrated Frosted Glass Lens 5' #18-2
- ▶ Lifetime Bronze Casting, Ten Year LED Integrated Warranty, UL Listed

Design Tip

CAST Craftsman, Savannah, and Classic Deck Lights provide glare-free illumination that serves to accentuate rough surfaces while providing safe and secure passage throughout the property.



Deck Light
CDL1CB



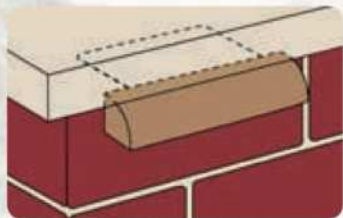




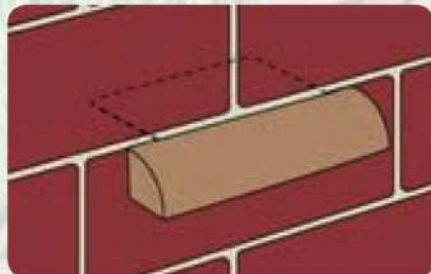
Wall Light CEWL5CB

CAST Solid Bronze Engineered Wall Light

Compact, rugged and versatile light features a copper mounting bracket. Can be quickly and easily installed on retaining walls (under capstones and between blocks), on stair risers and under railings. It provides a wide and even illumination.



Typical under-capstone installation



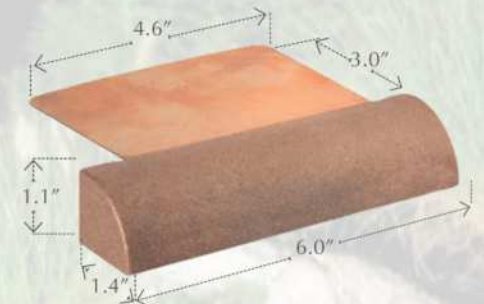
Between blocks installation

FEATURES

- ▶ Solid bronze body, copper bracket
- ▶ Lamp compartment enclosed with frosted glass lens
- ▶ High temperature socket and internal wiring
- ▶ Bracket extends from back of body allowing flush mounting with no visible hardware
- ▶ Bracket can be bent or offset from wall to control beam direction
- ▶ Pre-wired with 25', #18-2 No-Ox[®] tin-coated marine-grade wire
- ▶ Provided with T5 LED Lamp (Drop-in)
- ▶ Lifetime Bronze Casting, Ten Year LED Integrated Warranty, UL Listed

ACCESSORIES:

Set-N-Stone[®] Module (CSIS) Wire Conduit (CSISC)



CEWL5CB (Drop-in LED)
CEWL5LED1 (Integrated)



Same dimensions as CEWL5CB

CEWL6CB (Drop-in LED)
CEWL6LED1 (Integrated)

Note: for best installation in stone walls use Set-N-Stone[®] Mounting System to prevent wire damage and ease of maintaining fixtures.

"CAST LIGHTING BROUGHT
A SENSE OF WARMTH
TO OUR HOME"





"OUR LANDSCAPE AND ARCHITECTURAL
DETAILS TRULY CAME TO LIFE AFTER
INSTALLING CAST LIGHTING."



CAST Well Lights

These rugged below-grade lights feature corrosion-resistant housings and gimbals. Three types are available - PAR36, Integrated LED, and MR-16. All types accommodate solid bronze grates or convex borosilicate lenses (with bronze rings). These lights are ideal for in-turf or hardscape applications.

Below Grade Durability

CWLG1CB



Standard Well Light Grate

CWLG2CB



Standard Well Light Grate with "Mouse Hole" for LED Optics

CWLR1CB



Standard Well Light Glass Lens & Ring

CWLNOLAMP



Reversible Well Light Below Grade Canister with Gimbel Ring and 25' #16-2 No-Ox Wire

LED GROUND LIGHT



Integrated LED Ground Light Wash & 36° Optic Up-Light

MR-16 GROUND LIGHT



Drop-in MR16 Below Grade Up-Light.
Shown with glass lens & ring



Design Tip

CAST Well Lights are ideal when the light source needs to originate from a flat paved or turf surface.

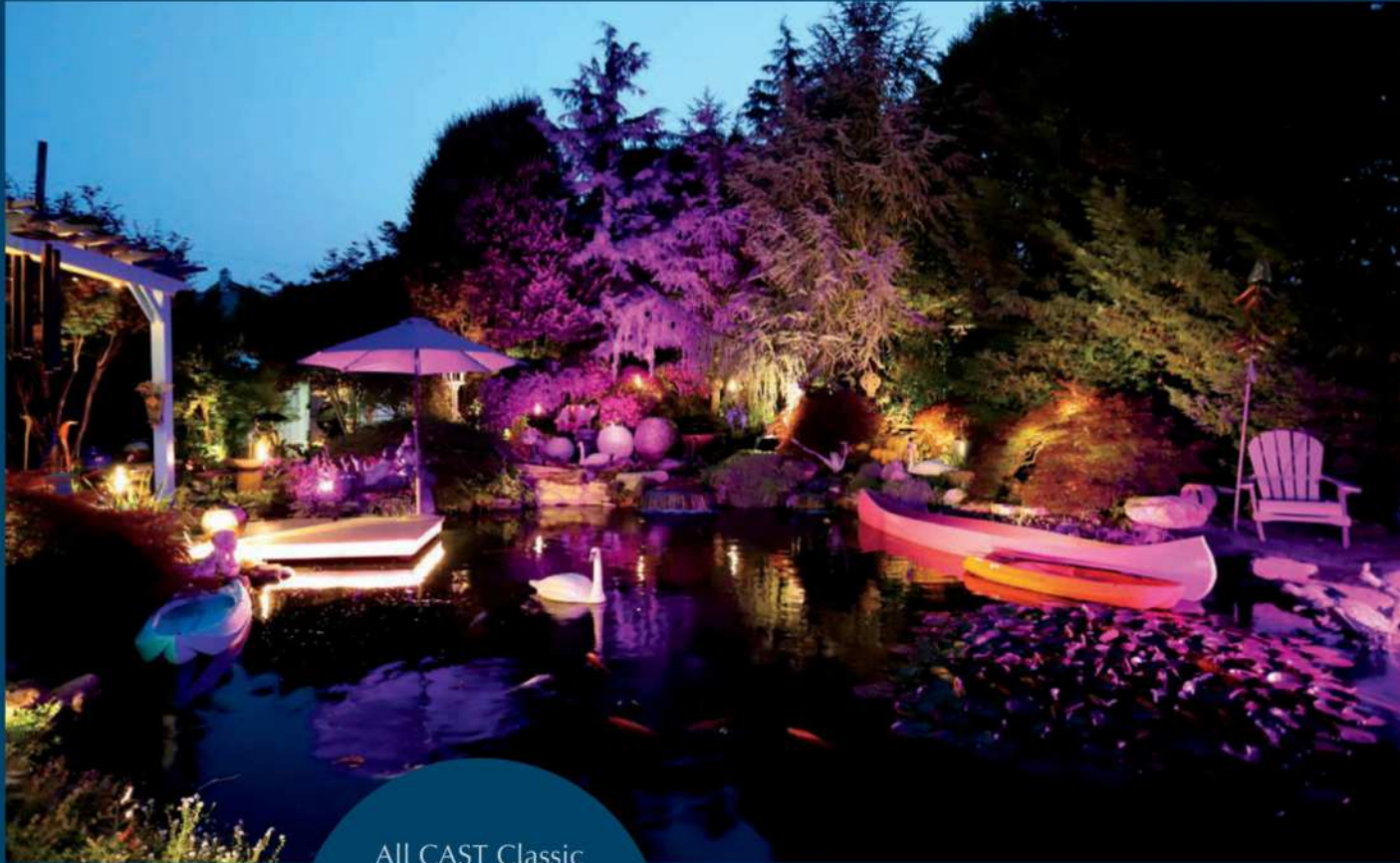
— Bluetooth Color Control —



SOURCE by Cast Lighting offers a complete line of Bluetooth Color Control products



CAST Classic Path/Area Lighting Color Control



All CAST Classic Path Lights can operate in white LED light or Bluetooth Color Control



— Light Options —

Standard White LED
(2700K)



CALED2

For amazing glare-free white LED lighting, use our integrated CALED2 module.

(Also available in turtle-safe amber)

Bluetooth Color Control



CALED2BT

Any color you want...white when you don't. Limitless color for your landscape





New Orleans Area/ Path Light
CNO1CB

Design Tip

All CAST Lights can be mounted on a solid surface using one of our canopy mounts. This type of mounting provides exceptional stability and ensures that fixtures will remain straight and secure.



We are proud to produce this model in the USA

CAST Solid Bronze New Orleans Area/Path Light

This rugged path light features a decorative scalloped hood and provides a circular spread of diffused and glare-free illumination. Ideal for garden beds, walkways, or driveways.

FEATURES

- ▶ Glare-free reflected light source
- ▶ Solid bronze top, body, and stake
- ▶ Heavy-gauge copper stem
- ▶ High-temperature socket and internal wiring
- ▶ Pre-wired with 25', #16-2 No-Ox[®] tin-coated wire
- ▶ Uses S8 wedge base LED lamp (not included)
- ▶ Use Glare Free LED module #CALED2, or CALED2BT color control Bluetooth for exceptional lighting
- ▶ Lifetime Bronze Casting Warranty, UL Listed

ACCESSORIES:

Mounting Canopy (CFM1CBS)







Savannah Area/Path Light
CSA1CB

CAST Solid Bronze Savannah Area/Path Light

This solid bronze luminaire features a decorative hood with scroll and provides a circular spread of diffuse illumination. It is ideal for garden beds, walkways, or driveways.

Design Tip

The CAST Savannah Path Light is the brightest of the CAST Path Lights and has the widest beam spread. It is especially useful for lighting wide paths or paths where a higher illuminance is required.

FEATURES

- ▶ Solid bronze top, body, and stake
- ▶ Heavy-gauge copper stem
- ▶ High-temperature socket and internal wiring
- ▶ Pre-wired with 35', #16-2 No-Ox[®] tin-coated marine-grade wire
- ▶ Provided with S8 wedge base LED lamp (Drop-in CSA1CB)
- ▶ Lifetime Bronze Casting, Ten Year LED Integrated Warranty, UL Listed

ACCESSORIES:

Mounting Canopy (CFM1CBS)



CSA1CB (Drop-in)
CSA1LED2 (Integrated)





Large Mushroom Light
CMU2CB



Small Mushroom Light
CMU1CB

CAST Solid Bronze Mushroom Area/Path Lights

These rugged path lights feature semi-spherical domes in two sizes. They provide circular spreads of glare-free lighting and are ideal for illuminating planting beds, walkways, or driveways. The Small Mushroom Light with canopy mount and three-inch stem is ideal for mounting on capstones, posts, and piers.



We are proud to produce these models in the USA

FEATURES

- ▶ Glare-free reflected light source
- ▶ Solid bronze top, body and stake
- ▶ Heavy-gauge copper stem
- ▶ Pre-wired with tin-coated No-Ox[®] tin-coated marine-grade wire:
 - 25' #16-2 (CMU1CB, CMU13CB)
 - 35' #16-2 (CMU2CB)
- ▶ Uses S8 wedge base LED lamp (not included)
- ▶ Use Glare Free LED module #CALED2, or CALED2BT color control Bluetooth for exceptional lighting
- ▶ Lifetime Bronze Casting Warranty, UL Listed

ACCESSORIES:

Mounting Canopy (CFM1CB)



Design Tip

CAST Small Mushroom Lights provide glare-free path illumination. As in all good lighting designs, a combination of fixture types are selectively used to satisfy lighting goals and to create a natural and inviting mood.





**Small China Hat
CCH1CB**

CAST Solid Bronze China Hat Area/Path Light

These rugged luminaires feature classic lines and provide circular spreads of diffuse glare-free lighting. Three sizes (large, small, and mini) accommodate diverse applications such as garden beds, walkways, stairs and driveways.



We are proud to produce these models in the USA:
CCH2CB, CCH1CB,
CCH13CB

FEATURES

- ▶ Glare-free reflected light source (CCH1,2,13 & CCH5LED1)
- ▶ Solid bronze top, body and stake
- ▶ Heavy-gauge copper stem
- ▶ Pre-wired with tin-coated No-Ox[®] tin-coated marine-grade wire:
 - 25' #16-2 (CCH1CB, CCH13CB, CCH5LED1, CCH5CB)
 - 35' #16-2 (CCH2CB)
- ▶ Uses S8 wedge base LED lamp (not included)
- ▶ Use Glare Free LED module #CALED2, or CALED2BT color control Bluetooth for exceptional lighting (CCH1,2 & 13)
- ▶ Lifetime Bronze Casting Warranty, 10 Year Integrated LED, UL Listed

ACCESSORIES:

Mounting Canopy (CFM1CB)



CAST Saratoga Area/Path Light

The Saratoga Area/Path Light was designed as tribute to the conical designs of the many conifer trees that populate the northern hemisphere, such as Cedars, Fir, Pines, Hemlocks, and Spruce, and works beautifully in those landscape settings.



Saratoga Area/Path Light
CSR1CB

The Saratoga provides a circular spread of glare free lighting ideal for illuminating planting beds, walkways, stairs or driveways.

FEATURES

- ▶ Glare-free reflected light source
- ▶ Solid bronze top, body, and stake
- ▶ Heavy-gauge copper stem
- ▶ High-temperature socket and internal wiring
- ▶ Pre-wired with 25', #16-2 No-Ox[®] tin-coated marine-grade wire
- ▶ Uses S8 wedge base LED lamp (not included)
- ▶ Use Glare Free LED module #CALED2, or CALED2BT color control Bluetooth for exceptional lighting
- ▶ Lifetime Bronze Casting Warranty, 10 Year Integrated LED, UL Listed

ACCESSORIES:

Mounting Canopy (CFM1CBS)



We are proud to produce this model in the USA

CSR1CB



Chelsea Area/Path Light
CCL1CB

The fixture is incredibly durable, providing circular spread of glare free lighting ideal for illuminating planting beds, walkways, stairs, or driveways.



We are proud to produce this model in the USA

CAST Chelsea London Area/Path Light

The Chelsea London Area/Path Light is reminiscent of the brownstone carvings found in decorative fence posts finials, wall and architectural elements. This style is still used today in many parasol umbrella designs and works beautifully complimenting any classic waterfront resort or villa.

FEATURES

- ▶ Glare-free reflected light source
- ▶ Solid bronze top, body, and stake
- ▶ Heavy-gauge copper stem
- ▶ High-temperature socket and internal wiring
- ▶ Pre-wired with 35', #16-2 No-Ox[®] tin-coated marine-grade wire
- ▶ Uses S8 wedge base LED lamp (not included)
- ▶ Use Glare Free LED module #CALED2, or CALED2BT color control Bluetooth for exceptional lighting
- ▶ Lifetime Bronze Casting Warranty, 10 Year Integrated LED, UL Listed

ACCESSORIES:

Mounting Canopy (CFM1CBS)



CCL1CB



Nouveau Area/Path Light
CNOU2CB

The Nouveau will add an unmatched architectural element to your property that you will enjoy during the day and at night. The fixture is incredibly durable, providing circular spread of glare free lighting ideal for illuminating planting beds, walkways, stairs, or driveways.

CAST Nouveau Area/Path Light

The Nouveau Area/Path Light is a tribute to an ornamental style that flourished between 1890 and 1910. Art Nouveau design is made up of undulating, asymmetrical, graceful, and delicate lines that form a synthesis of elegance and structure. This design was inspired by a glass table lamp that flowed and curved seamlessly with the surroundings.

FEATURES

- ▶ Glare-free reflected light source
- ▶ Solid bronze top, body, and stake
- ▶ Heavy-gauge copper stem
- ▶ High-temperature socket and internal wiring
- ▶ Pre-wired with 35', #16-2 No-Ox[®] tin-coated marine-grade wire
- ▶ Uses S8 wedge base LED lamp (not included)
- ▶ Use Glare Free LED module #CALED2, or CALED2BT color control Bluetooth for exceptional lighting
- ▶ Lifetime Bronze Casting Warranty, 10 Year Integrated LED, UL Listed

ACCESSORIES:

Mounting Canopy (CFM1CBS)





**Prairie Area/Path Light
CPL1CB**

The fixture is incredibly durable, providing circular spread of light that is visible if elevated above your eye which can cause glare. The Prairie Light is ideal for illuminating planting beds, walkways, stairs, or driveways. Best installed on flat ground with very slight grade differences.

CAST Prairie Area/Path Light

The Prairie Area/Path Light is a tribute to the clean lines of the organic architecture movement by the acclaimed architect Frank Lloyd Wright. Prairie light takes its name from the architectural prairie style Wright and other architects championed which uses strong horizontal and crisp clean lines.

FEATURES

- ▶ Glare-free direct light source
- ▶ Solid bronze top, body and stake
- ▶ Heavy-gauge copper stem
- ▶ Pre-wired with 5' #16-2 No-Ox tin-coated marine-grade wire
- ▶ Integrated LED Light Source
- ▶ Lifetime Bronze Casting Warranty, UL Listed

ACCESSORIES:

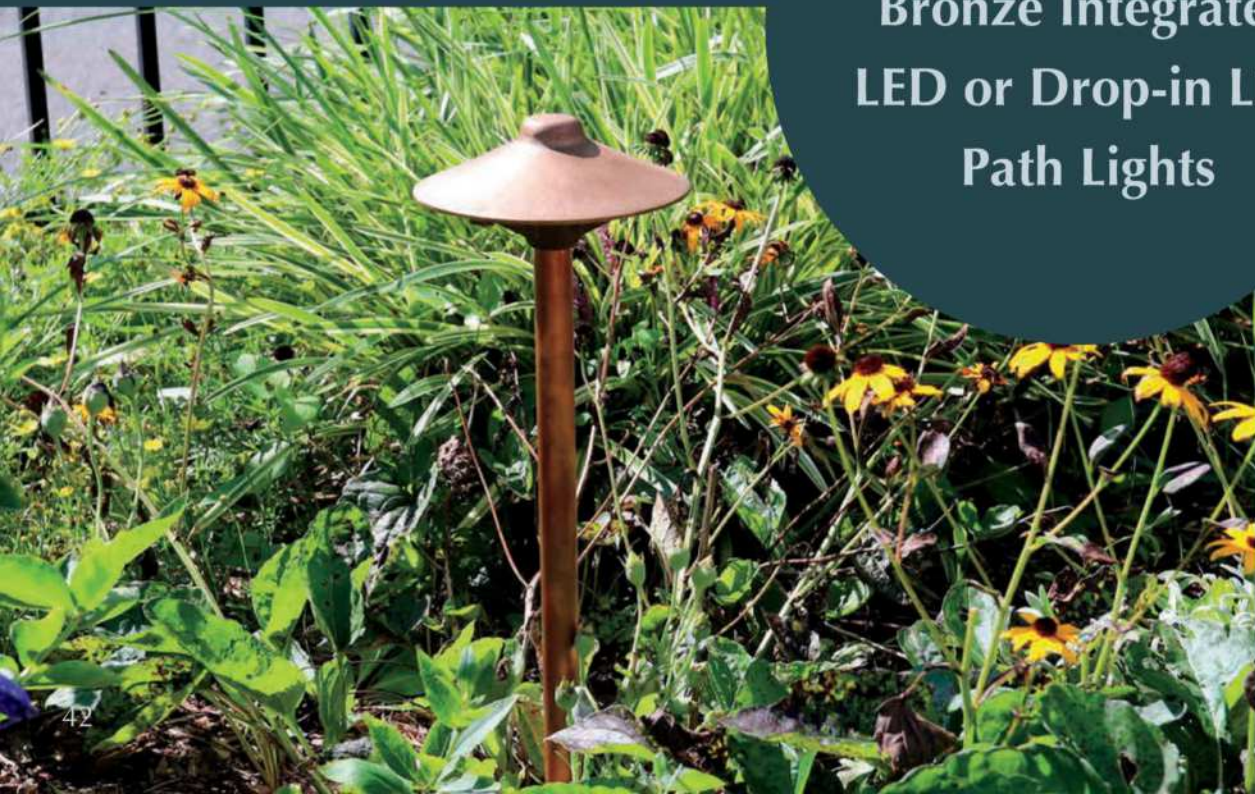
Mounting Canopy (CFM1CB)



We are proud to produce this model in the USA



CAST Craftsmen Series
Bronze Integrated
LED or Drop-in LED
Path Lights



CAST Craftsmen Series Bronze Integrated LED or Drop-in LED Path Light

These rugged luminaires feature classic lines and provide circular spreads of diffuse lighting. Four designs to choose from and available in glare-free integrated and drop-in LED. This line was designed for intimate spaces - complementing any landscape design.

Integrated & Glare-Free

SEE THE EFFECT
NOT THE
SOURCE

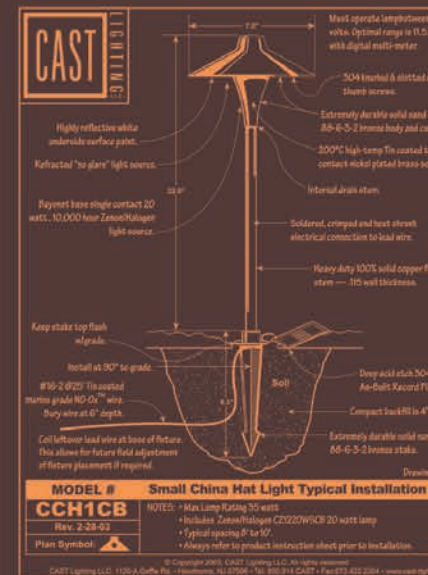
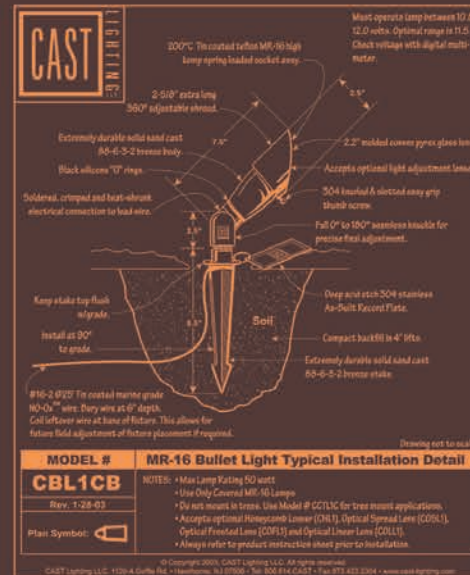
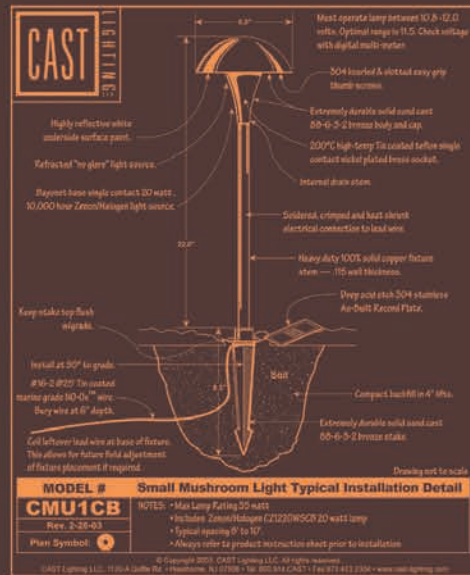
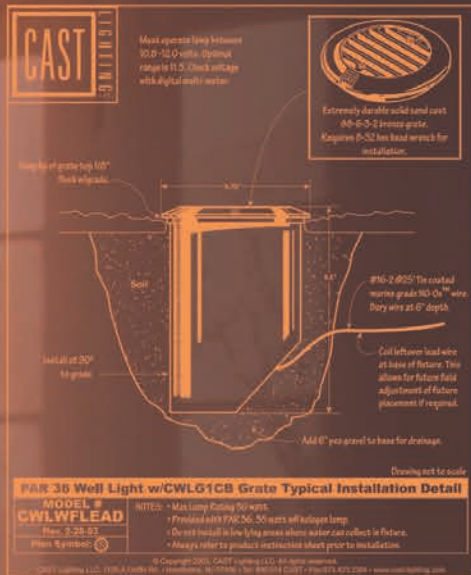
FEATURES

- ▶ Glare-free reflected and direct drop-in light source
- ▶ Solid bronze top, body, and stake
- ▶ Heavy-gauge copper stem
- ▶ High-temperature socket and internal wiring
- ▶ Pre-wired with 5' #16-2 No-Ox[®] tin-coated marine-grade wire
- ▶ Uses bi-pin GY6 MR16 Socket for drop-in lamp (provided)
- ▶ Uses integrated glare-free LED
- ▶ Lifetime Bronze Casting Warranty, 10 Year Integrated LED, UL Listed



We are proud to
produce these
models in the USA





SUPPORT FOR ARCHITECTS AND DESIGNERS

When Landscape Architects undertake lighting projects, they need absolute confidence that system components function exactly as specified. CAST Lighting works closely with Architects and Designers, supporting them by providing performance bid specifications, product and typical installation detail drawings, and accurate photometrics.

The CAST Performance Bid Specification is an extremely valuable tool. It enables the Architect to build specifications based on performance to ensure that installations are carried through with the highest system integrity.

The keystone of CAST's support is our website at www.cast-lighting.com. Instead of producing specification binders, we give ready access to all updated detail drawings and photometrics. These can be freely downloaded and inserted into bid packages. They are also available, free-of-charge, on CD and through www.caddetails.com.

Available online at www.cast-lighting.com

CAST LOW VOLTAGE MULTI-TAP TRANSFORMERS



The transformer is the heart of every landscape lighting system. CAST transformers represent the state-of-the-art in materials, design and performance.

- **Resin Sealed Toroid Core - not Air-Cooled EI Type**
Toroid cores run cooler, are 8-10% more efficient, lighter, and produce no noise.
- **Tin-coated Internal Wiring Rated to 125°C**
- **Durable 304 Stainless Steel Enclosure**
- **Dedicated Wire Loop for Testing Primary Load**
A convenient and safe testing point that can be used with time clock and photocell in place.
- **Secondary Magnetic Circuit Breakers, Core Thermal Cut-off**
Secondary breakers can be used to switch on/off lighting zones. No thermal reset buttons or buss fuses to replace. Low-OFF-Hi switch provided.
- **Quick-Connect Photocell and Time Clock Options**
Outlets on the inside panel accommodate CAST manual or digital time clocks and standard or remote photocells. Knockouts on both sides give maximum mounting flexibility.
- **Oversized 125 Amp Terminal Lugs. 12V to 15V Taps**
Each voltage tap can accommodate full transformer load. Available voltage taps: 12V, 13V, 14V, 15V. Lightning fast voltage adjustment between taps.
- **Drop down Bottom Panel Knockouts**
For seamless wire installation

CAST MULTI-TAP TRANSFORMERS

Model	Watts	Voltage Taps
Master Series - Stainless Steel, Extra Common		
CM900SSMT	900	12-18
CM1200SSMT	1200	12-18
Journeyman Series - Stainless Steel		
CJ300SSMT	300	12-15
CJ600SSMT*	600	12-15
CJ900SSMT	900	12-15
Mini Stainless Steel Transformers - with Internal Time Clock		
CJT75SSMTTC	75	12V, 15V

TRANSFORMER ACCESSORIES

Model	Description
CTTC	Manual Time Clock
CTDTC*	Digital Time Clock
CTPC*	Photocell
CTRPC	Remote Photocell

*220/240V Models Available

CAST LIGHTING NO-OX[®] TIN-COATED MARINE-GRADE WIRE

The outdoor environment corrodes ordinary all-copper wire; CAST Lighting tin-coated marine-grade wire resists corrosion and maintains system integrity.



CAST Lighting No-Ox[®] Tin-Coated Marine-Grade Wire is UL listed for the US and Canada.

CAST LIGHTING NO-OX[®] WIRE*

Model	Gauge	Feet
CLW162500	#16/2	500'
CLW142500	#14/2	500'
CLW122500	#12/2	500'
CLW122250	#12/2	250'
CLW102500	#10/2	500'
CLW82500	#8/2	500'

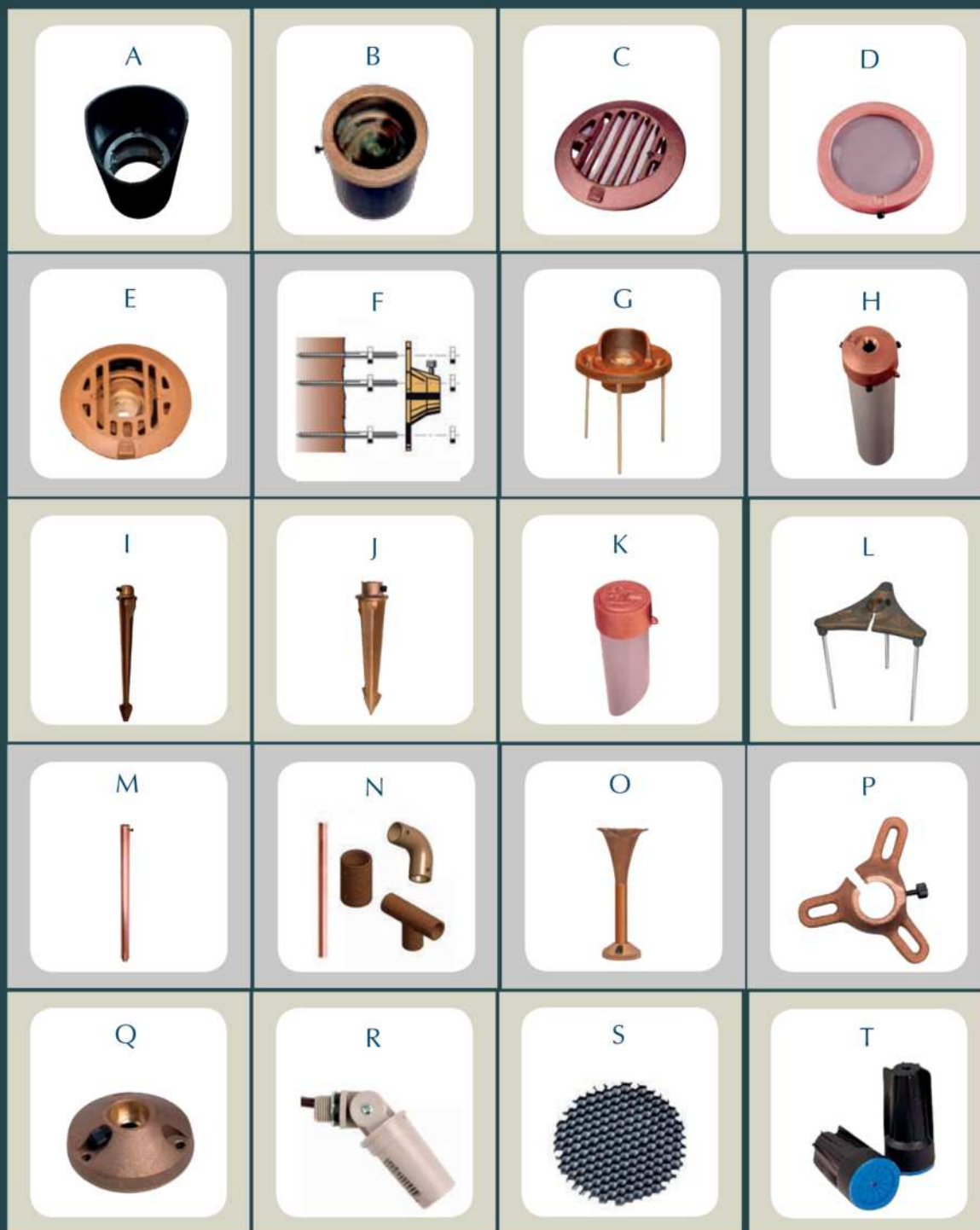
*Wire is printed with remaining feet.

Reference Guide: FIXTURES

<p>CBL1CB</p>  <p>P.7</p>	<p>CBLED141</p>  <p>P.7</p>	<p>CBAL1CB</p>  <p>P.9</p>	<p>CBL5CB</p>  <p>P.11</p>	<p>CCTL1C</p>  <p>P.13</p>	<p>CCSL25036B</p>  <p>P.15</p>
<p>CNL1CB</p>  <p>P.17</p>	<p>CWW1CB</p>  <p>P.19</p>	<p>CCDL1B</p>  <p>P.21</p>	<p>CDL2CB</p>  <p>P.21</p>	<p>CDL1CB</p>  <p>P.21</p>	<p>CEWL5CB</p>  <p>P.23</p>
<p>CNO1CB</p>  <p>P.31</p>	<p>CNO13CB</p>  <p>P.31</p>	<p>CSA1CB</p>  <p>P.33</p>	<p>CMU2CB</p>  <p>P.35</p>	<p>CMU1CB</p>  <p>P.35</p>	<p>CMU13CB</p>  <p>P.35</p>
<p>CCH5CB</p>  <p>P.37</p>	<p>CCH2CB</p>  <p>P.37</p>	<p>CCH1CB</p>  <p>P.37</p>	<p>CCH13CB</p>  <p>P.37</p>	<p>CSR1CB</p>  <p>P.38</p>	<p>CCL1CB</p>  <p>P.39</p>
<p>CNOU2CB</p>  <p>P.40</p>	<p>CPL1CB</p>  <p>P.41</p>	<p>CCPLCHB</p>  <p>P.43</p>	<p>CCPLCAB</p>  <p>P.43</p>	<p>CCPLBOB</p>  <p>P.43</p>	<p>CCPL2B</p>  <p>P.43</p>











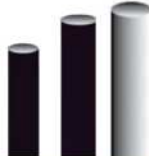






BUILT TO LAST

Reference Guide: ACCESSORIES



Model	Description
A	Well Light Can with Gimble Ring
B	MR-16 Well Light
C	Well Light Grate
D	Well Light Lens & Bronze Ring
E	Well Light Grate with Mouse Hole Opening
F	Stainless Steel Tree Mount Hardware
G	In-ground Integrated Up Light
H	Heavy Duty 1/2" FPT Mounting Stake
I	Long Solid Bronze Set-In-Stake
J	Standard Solid Bronze Set-In-Stake
K	Spider Splice Box Assembly
L	Large Talon Set-In-Stake
M	Path/Bullet Light Telescopic Stem Extensions
N	Set-In-Stake Custom Riser System
O	Floor Mount Stem Assembly
P	Tree Mounting Canopy
Q	Set-In-Stake Mounting Canopy
R	Remote/Plug-In Photocell
S	MR-16 Honeycomb Louver
T	20-Amp Waterproof Wire Nut

Reference Guide: ACCESSORIES

U 	V 	W 	X 
Y 	Z 	AA 	AB 
AC 	AD 	AE 	AF 
AG 	AH 	AI 	AJ 
AK 	AL 	AM 	AN 

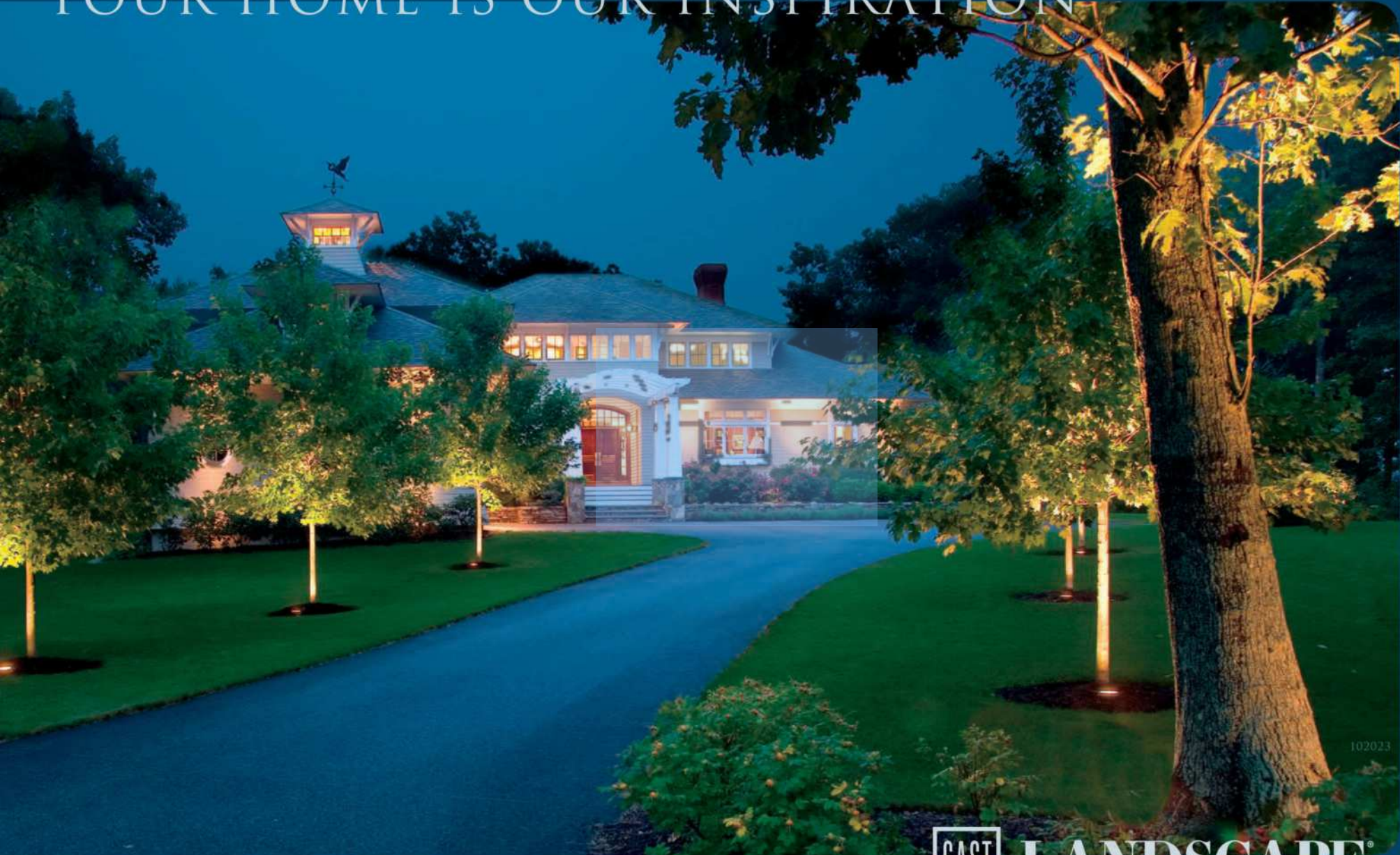
Model	Description
U	Set-In-Stone Flexible Conduit 82' Roll
V	Set-In-Stone Wall Light Mounting Module
W	1/2" FPT Set-In-Stake Brass Transition Adapter
X	1/2" MPT Set-In-Stake Tree Light Transition Adapter
Y	S8 Voltage Testing Tool
Z	MR-16 Voltage Testing Tool
AA	Wire Crimping Tool
AB	8-Bit Screwdriver
AC	Ideal Automatic Wire Stripper
AD	Wire Spinner Dispenser
AE	No-Ox Tin-Coated Marine-Grade Wire
AF	Heat Shrink with Internal Sealant
AG	Parallel Wire Splice Crimp Connector
AH	Butt Wire Splice Crimp Connector
AI	Low-voltage Power Supply
AJ	Contractor Parts Kit
AK	Plug-In Time Clock
AL	Digital Time Clock
AM	Drop-in MR-16 & MR-11 LED Lamps
AN	Drop-in CALED2 Path Light Module



OLD
WORLD
CRAFTSMANSHIP...
TOMORROW'S
TECHNOLOGY®



YOUR HOME IS OUR INSPIRATION



102023

WWW.CAST-LIGHTING.COM ☎ 973-423-2303 ✉ INFO@CAST-LIGHTING.COM

CAST LANDSCAPE®