



NAPOLEON® BARBECUES & ACCESSORIES

MAIN CATALOGUE 2023



CONTENTS



Editorial	03
Company History	04 - 05
SIZZLE ZONE™ Infrared Burners	06 - 07
Sear Plates & Ignition System	08
WAVE™ Cooking Grids	09
The Phantom® Series	10 - 15
The FREESTYLE™ Series	16 - 19
The Rogue® Series	20 - 37
The Prestige® Series	38 - 47
Portable BBQs	48 - 55
Charcoal BBQs	56 - 61
BBQ Accessories	62 - 67
BBQ Model Overview	68 - 73
Warranty	74 - 75

MEET OUR RANGE AND FIND YOUR PERSONAL BBQ.

ROGUE®

ROGUE^{XT}

ROGUE^{SE}

Prestige

Prestige 

PHANTOM

 **TRAVELQ**
PORTABLE GAS GRILL

CHARCOAL
PROFESSIONAL

FREESTYLE

DEAR BBQ FRIENDS,

Welcome to the 2023 Napoleon® Main Catalogue!

The past year once again held many challenges, so we were all the more pleased about the enthusiasm and loyalty of our customers.

The Napoleon® Phantom™ Special Edition was once again at the top of many barbecue fans' wish lists last year. A great success that makes us proud. Even better, due to its great popularity, the Phantom™ Special Edition will be expanded in 2023. With the Phantom™ Freestyle 425 SIB, a gas barbecue from our entry-level series now also has the ultra-cool, black look.

Many Napoleon® fans know the legendary SIZZLE ZONE™ not only from the appliances mentioned. The infrared burner with a temperature of up to 800 degrees Celsius is now regarded as the quintessence of steakhouse-quality meat preparation. And it is also highly regarded as an additional cooking area for pots and pans. The fact that the Napoleon® SIZZLE ZONE™ is not a fad is impressively underlined this year: The SIZZLE ZONE™ is 20 years old! This makes Napoleon® without a doubt the pioneer in infrared burners

Now we hope you enjoy browsing through and looking at the 2023 Napoleon® main catalogue! This year, we are once again presenting our customers with high-quality products and accessories that have been developed with a passion for barbecuing. We hope to bring new ideas and inspiration to the fascinating world of barbecuing.

All the best
Your Napoleon® Team UK



WE CELEBRATE



YEARS OF
SIZZLE ZONE



COMPANY HISTORY

MADE IN CANADA

The story of our BBQs began in 1976 when a small steel fabrication business launched by Wolfgang Schroeter started manufacturing steel railings in Barrie, Ontario, Canada. At that time, no one could imagine the incredible future that lay ahead for Wolf Steel Ltd and the Napoleon® stoves and BBQs that would follow.



**GLOBALLY
RENEWED
QUALITY.**

PASSION FOR FIRE

Napoleon® is an ISO 9001:2015 certified company in Canada with more than 186,000 square metres of manufacturing space and over 2000 associates. We are North America's largest privately owned manufacturer of quality wood and gas fireplaces and stoves, gas and charcoal BBQs, as well as outdoor living products. The rapid expansion of Napoleon® is a direct result of our uncompromising manufacturing quality, innovation and honest, reliable customer service.

The biggest factor contributing to our success is that the customer is at the heart of all our products. At Napoleon®, we are satisfied when users are impressed not just by the grills themselves but by the meals they prepare on them and the associated experience.

What could be better than sharing delicious BBQ recipes and precious time with friends and family?





UP TO
800°C

HOT, HOTTER, SIZZLE ZONE™

Using charcoal is the traditional form of infrared grilling that we're all familiar with: glowing briquettes emit direct heat through infrared energy into the food being grilled, giving that mouthwatering smoky aroma and delicious crust.

With the SIZZLE ZONE™ infrared burners from Napoleon®, you get these benefits plus convenient gas technology: each burner contains thousands of gas outlets that heat the ceramic surface until it starts to glow red. The resulting infrared rays don't just warm the ambient air; the heat penetrates directly and deeply into the food. It also creates a consistent thermal area that compared with a charcoal fire, is much easier to control.

Napoleon® infrared burners produce extremely high temperatures, making them ideal for the preparation of juicy steaks, burgers and other meats. The SIZZLE ZONE™ can also be used as a side burner, and combined with a ceramic heat plate provides the perfect way to prepare delicious stir fries in a wok.

Behind the SIZZLE ZONE™ infrared burners you'll find a lot of know-how, experience and pioneering work: the technology was already installed in the first gas grills from Napoleon® in 2003. This makes the SIZZLE ZONE™ much more than a fad. Rather, it stands for the Napoleon® brand like no other feature.

BBQs with SIZZLE ZONE™ Technology

- Freestyle™ 365SIB
- Freestyle™ 425SIB
- Freestyle™ 425SIB-Phantom
- Rogue® XT 365SIB-1
- Rogue® XT 425SIB-1
- Rogue® XT 525SIB-1
- Rogue® XT 625SIB-1

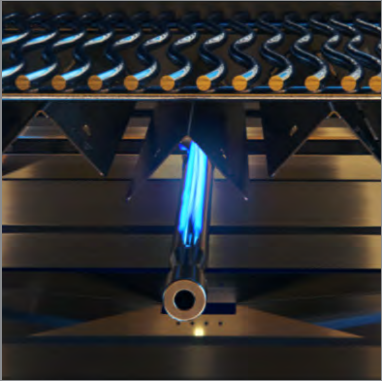
BBQs with large SIZZLE ZONE™

- Rogue® SE 425-1
- Rogue® SE 425-1-Phantom
- Rogue® SE 525-1
- Rogue® SE 625-1

- Prestige® 500-3
- Prestige® 500-3-Phantom
- Prestige® 665-1

- Prestige PRO™ 500-3
- Prestige PRO™ 665-3
- Prestige PRO™ 825-3





HEAT, EVENLY DISTRIBUTED

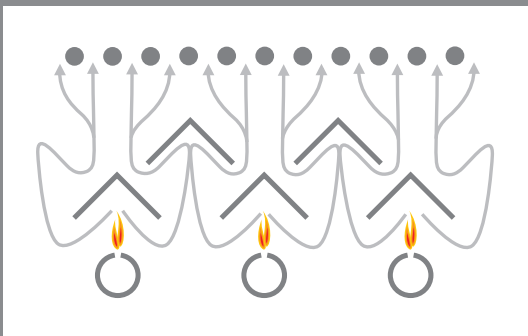
The dual-level sear plates allow for consistent circulation of heat to the cooking grids, preventing the occurrence of „hotspots“.

It's not just the staggered height of the plates that makes them effective; it's also their rising position from back to front, which allows naturally hotter air at the back to move to the front where it's cooler.

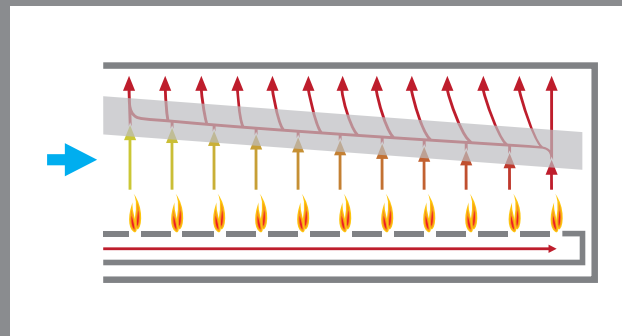
What's more, the self-cleaning plates reduce gas flame flare-ups because they channel any dripping fat or juices away from the flames, making barbecuing safer and giving your food a better, more intense flavour.

For further explanation, see the images below.

The upper sear plates circulate the hot air from the burners so that the area between burners gets hot enough as well.



The slightly rising position of the sear plates allows naturally hotter air at the back to move to the front and balance out the difference in temperature.



**JETFIRE™ –
AN ENLIGHTENED IDEA**

Igniting a Napoleon® gas burner is made easy by Napoleon's unique innovative JETFIRE™ ignition system which ignites each individual burner with a strong burst of flame from a separate gas outlet. This allows for the burners to ignite even in extreme weather – the dreaded click of a failed Piezo ignition is a thing of the past.

This innovative technology is only used in this way in Napoleon® BBQs.

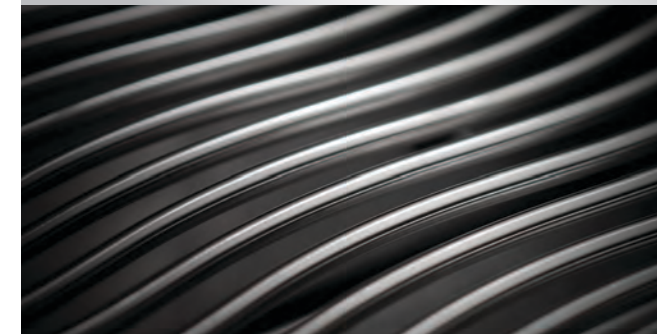


ON THE SAME WAVELENGTH

The unique shape of the WAVE™ cooking grids gives food an attractive sear pattern that can only be found with a Napoleon® BBQ. But the wave shape doesn't just give your food an appetising appearance, it also has practical benefits: the wavy cooking grid promotes more evenly distributed heat and also makes it much harder for small bits of food to fall through. Once again, it is the small details that make a Napoleon® BBQ a Napoleon® BBQ.



WAVE™ cast iron cooking grids



WAVE™ stainless steel cooking grids



WAVE™ cast stainless steel cooking grids

STANDARD FEATURES

Both the JETFIRE™ ignition system and the WAVE™ cooking grids come as standard with all our gas BBQs. The dual-level sear plates are also standard with all gas BBQs except the TravelQ™ and Freestyle series.

PHANTOM
SERIES GAS BBQS



PHANTOM

MORE THAN A LOOK

THE PHANTOM® SERIES



The Phantom™ Special Edition from Napoleon® enhances four barbecue models in a particularly eye-catching way: The Phantom™ TravelQ™ PRO285X, the Phantom™ Rogue® SE425, the Phantom™ Prestige® 500 and now also the new Phantom™ Freestyle 425 come in an all-black finish.

But the Phantom™ models are not only impressive because of their special appearance. All models come with a grilling rack included and in the case of the Phantom™ Freestyle 425, Phantom™ Rogue® SE425 and Phantom™ Prestige® 500 this is the unique multi-functional design.

Another highlight are the cast stainless steel cooking grids of the Phantom™ Prestige® 500 - both for the main cooking area and for the SIZZLE ZONE™. High-quality stainless steel as a solid cast grid; an absolute novelty at Napoleon®. The Phantom™ Rogue® SE425 also receives an attractive upgrade: in addition to the main cooking area, the SIZZLE ZONE™ also has a solid stainless steel grid.



Phantom™ TravelQ™
PRO285X



Phantom™ Freestyle 425



Phantom™ Rogue® SE425-1



Phantom™ Prestige® 500-3

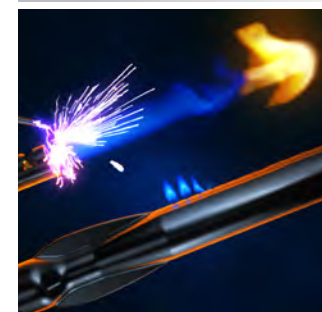
PHANTOM® FEATURES

Full matt black finish
for a stealthy look



ACCU-PROBE™ built-in
temperature gauge with
matt black finish

Including multi
functional
grilling rack
(F425, RSE425 & P500)



JETFIRE™
ignition system

PHANTOM SERIES GAS BBQS



Capacity to cook for up to
9 people

With 2 burners

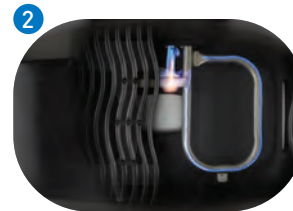
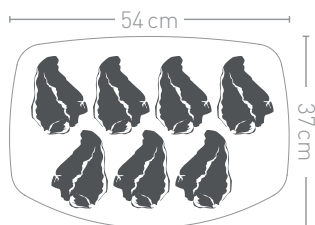


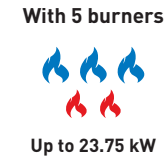
Up to 4.1 kW

LIMITED
EDITION

Phantom™ TravelQ™ PRO285X

- 1 Particularly compact design, easy assembly and light handling
- 2 Two stainless steel burners
- 3 ACCU-PROBE™ thermometer and control knobs with matt black finish
- 4 Durable, high WEATHER-GUARD™ lid in cast aluminium, able to accommodate larger joints e.g. a whole chicken
- 5 Porcelain coated cast iron WAVE™ cooking grids
- 6 Ergonomic Cool Touch handle
- 7 0.9 m hose and regulator for gas bottles of 5 and/ or 8 kg
- 8 Phantom™ TravelQ™ PRO285X mounted on a black folding cart with black wheels
- 9 Sets up with just one hand and locks into place
- 10 Stable hooks for hanging BBQ utensils and towels
- 11 Large wheels for easy manoeuvrability and stable scissor-cart frame made of powder-coated steel
- 12 Lid and base with matt black finish
- 13 Includes warming rack

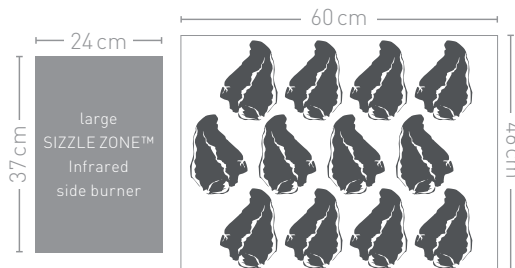




LIMITED EDITION

Phantom® Rogue SE425-1

- 1** Large **SIZZLE ZONE™** infrared side burner
- 2** **WAVE™** stainless steel cooking grids
- 3** **ACCU-PROBE™** temperature gauge & control knobs in matt black finish
- 4** 3 Stainless Steel main burners (4.75 kW each)
- 5** Rear rotisserie burner
- 6** Durable grill chamber made of cast aluminium
- 7** Side mounted condiment basket for extra storage room
- 8** Dual-level stainless steel heat distribution system
- 9** **JETFIRE™** ignition system
- 10** Extra high lid
- 11** Illuminated control knobs
- 12** Large side shelves (one fixed, one folding)
- 13** Black side castings and lid handle
- 14** Matt black door, lid and side shelves
- 15** Includes a Multifunctional Grilling Rack



PHANTOM SERIES GAS BBQS



0-800°C
exclusive infrared
SIZZLE ZONE™
technology



Capacity to cook for up to
15 people

LIFT EASE™



Roll top lid

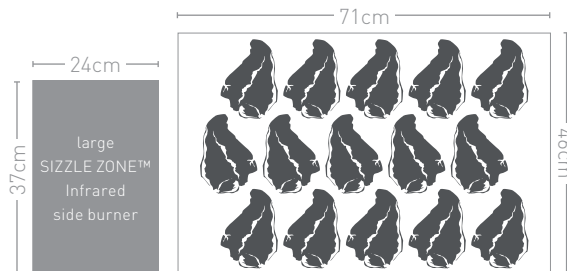
With 6 burners



Up to 25.7 kW

Phantom® Prestige 500-3

- 1 **SIZZLE ZONE™** infrared side burner with **WAVE™** cast stainless steel grid
- 2 4 large, durable stainless steel tube burners (4 kW each)
- 3 Space-saving **LIFT EASE™** roll top lid
- 4 **WAVE™** cast stainless steel cooking grids
- 5 Matt black side shelves with integrated condiment basket and utensil hooks. Folding right-hand shelf for space-saving storage
- 6 Matt black control panel with **JETFIRE™** ignition system
- 7 Large drip pan accessible from the front
- 8 Locking **EASY ROLL™** casters
- 9 **ACCU-PROBE™** temperature gauge and **SAFETY GLOW™** control knobs in matt black finish
- 10 Black side shelves, side castings, doors and lid
- 11 Includes a Multifunctional Grilling Rack





0-800°C
exclusive infrared
SIZZLE ZONE™
technology



Capacity to cook for up to
13 people

With 5 burners



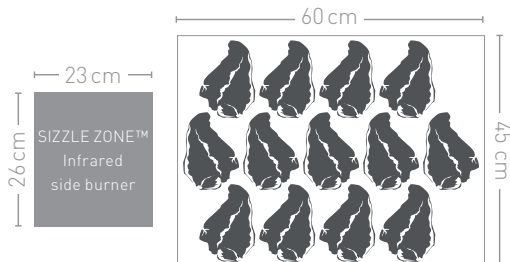
Up to 16,6kW



NEW

Phantom™ Freestyle™ 425

- 1 **SIZZLE ZONE™** infrared side burner
- 2 **WAVE™** Stainless Steel cooking grids
- 3 **ACCU-PROBE™** built-in temperature gauge with carbon fibre look and matt black finish
- 4 4 stainless steel main burners (3,4 kW each)
- 5 Durable grill chamber made of cast aluminium
- 6 Heat distribution system made of enamelled steel
- 7 **JETFIRE™** ignition system
- 8 Two large, weather-resistant wheels
- 9 Folding right side shelf
- 10 Black side castings and lid handle
- 11 **NEW:** Left hand opening door
- 12 Front accessible drip pan including a side accessible aluminium grease tray
- 13 Elegant, matt black look and lid with satin coating
- 14 Including Multifunctional Grilling Rack (#71501)



LIMITED EDITION



FREESTYLE

SERIES GAS BBQS



**START YOUR
NAPOLEON® JOURNEY HERE**

Don't like the fact that there are still limits to the freedom of barbecuing at the moment? Do you like the idea of being able to prepare more variety on the barbecue and to bring more enjoyment to the plate? Is switching from charcoal to a gas barbecue a desirable option? If the answer is yes in each case, we have something suitable: the Napoleon® Freestyle™ gas barbecue family!

Freestyle™ is the Napoleon® product range for barbecue enthusiasts who want to take the next step. Four different products, with varying features, tailored to the personal requirements and style of friends of high-quality grilling. From the robust entry-level model to the top model with comfort features that are otherwise only offered in the premium segment.

All Freestyle™ gas barbecues naturally offer the usual top quality from Napoleon®: A durable grill chamber made of cast aluminium, WAVE™ porcelain coated cast iron cooking grids, an ACCU-PROBE™ built-in temperature gauge and the JETFIRE™ ignition system. And all this in an exciting design that presents the synthesis of form and function in the best Napoleon® tradition.



Freestyle™ 365PGT
(Also available as 365SIBPGT
with SIZZLE ZONE™)



Freestyle™ 425PGT
(Also available as 425SIBPGT
with SIZZLE ZONE™)

FREESTYLE™ FEATURES

JETFIRE™
ignition system



ACCU-PROBE™
built-in temperature
gauge with Carbon look

Porcelain coated
cast iron **WAVE™**
cooking grids



Side shelf with
bottle opener

FREESTYLE
SERIES GAS BBQS



Capacity to cook for up to
11 people

With 3 burners



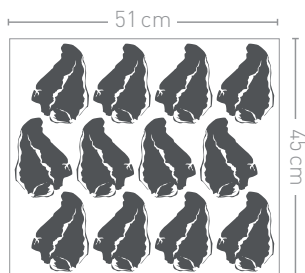
Up to 12kW

Freestyle™ 365

- 1 **WAVE™** porcelain coated cast iron cooking grids
- 2 **ACCU-PROBE™** built-in temperature gauge
- 3 3 stainless steel main burners (4 kW each)
- 4 Durable grill chamber made of cast aluminium
- 5 Two large, weather-resistant wheels
- 6 Folding side shelves (SIB-model right shelf only)
- 7 Heat distribution system made of enamelled steel
- 8 **JETFIRE™** ignition system
- 9 Front accessible drip pan including a side accessible aluminium grease tray
- 10 Large warming rack

Also available with
SIZZLE ZONE™

Freestyle™ 365 SIB
with 3 kW SIZZLE ZONE™





Capacity to cook for up to
13 people

With 4 burners



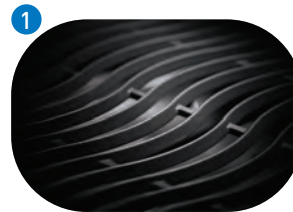
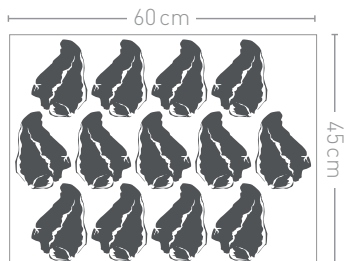
Up to 13,6 kW

Freestyle™ 425

- 1 **WAVE™** porcelain coated cast iron cooking grids
- 2 **ACCU-PROBE™** built-in temperature gauge
- 3 4 stainless steel main burners (3,4 kW each)
- 4 Durable grill chamber made of cast aluminium
- 5 Two large, weather-resistant wheels
- 6 Folding side shelves (SIB-model right shelf only)
- 7 Heat distribution system made of enamelled steel
- 8 **JETFIRE™** ignition system
- 9 Front accessible drip pan including a side accessible aluminium grease tray
- 10 Large warming rack

Also available with
SIZZLE ZONE™

Freestyle™ 425 SIB
with 3 kW SIZZLE ZONE™



ROGUE®
SERIES GAS BBQS



**THE ROGUE® WAY
IS THE RIGHT WAY
TO BARBECUE.**

THE ROGUE® SERIES



The Rogue® series combines innovative features, comprehensive functionality and modern black design! The high quality Rogue® gas grills offer a wide range of different sizes and features - from the compact Rogue® 365 with two main burners up to the Rogue® 525 with four main burners.

Quality and innovative features are very important in the Rogue® series. All models feature an aluminium die-cast tub for easy cleaning and the patented Napoleon® sear plate system ensures an even temperature distribution across the whole cooking area. Also, all Rogue® grills come with stainless steel burners, reliable JETFIRE™ ignition system, ACCU-PROBE™ lid temperature gauge and a front accessible drip pan.

All grills in the Rogue® series have one thing in common: an excellent price-performance ratio.

The Rogue® 365, 425, and 525 are no exception and due to their black finish, are especially easy to clean.



Rogue® 365-1



Rogue® 425-1



Rogue® 525-1

ROGUE® FEATURES

JETFIRE™
ignition system



ACCU-PROBE™
built-in temperature
gauge



Porcelain coated
cast iron **WAVE™**
cooking grids



Folding side shelves



ROGUE®

SERIES GAS BBQS



Capacity to cook for up to
11 people

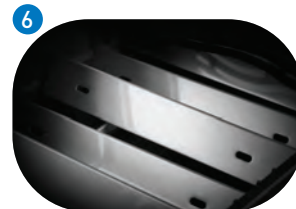
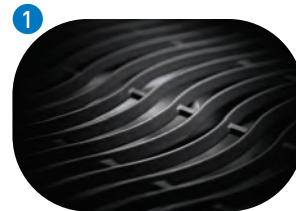
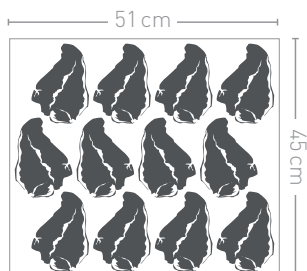
With 2 burners



Up to 10.5 kW

Rogue® 365-1

- 1 **WAVE™** porcelain coated cast iron cooking grids
- 2 **ACCU-PROBE™** built-in temperature gauge
- 3 2 stainless steel main burners (5,25 kW each)
- 4 Durable grill chamber made of cast aluminium
- 5 Folding side shelves
- 6 Dual-level stainless steel heat distribution system
- 7 **JETFIRE™** ignition system
- 8 Front Accessible drip pan
- 9 Grey knobs with integrated grey bezel
- 10 Modern black design
- 11 Large warming rack





Capacity to cook for up to
13 people

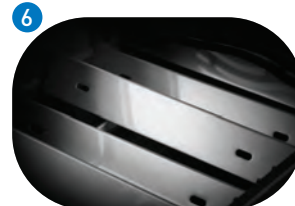
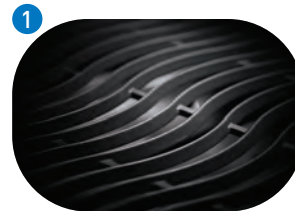
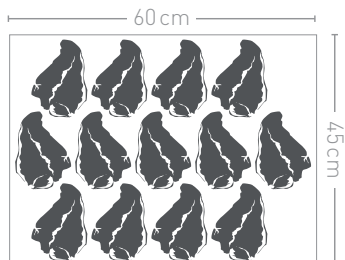
With 3 burners



Up to 14.25 kW

Rogue® 425-1

- 1 **WAVE™** porcelain coated cast iron cooking grids
- 2 **ACCU-PROBE™** built-in temperature gauge
- 3 3 stainless steel main burners (4.75 kW each)
- 4 Durable grill chamber made of cast aluminium
- 5 Folding side shelves
- 6 Dual-level stainless steel heat distribution system
- 7 **JETFIRE™** ignition system
- 8 Front Accessible drip pan
- 9 Grey knobs with integrated grey bezel
- 10 Modern black design
- 11 Large warming rack



ROGUE®

SERIES GAS BBQS



Capacity to cook for up to
15 people

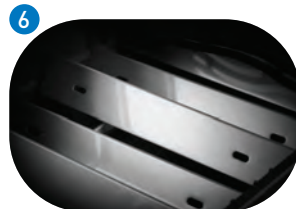
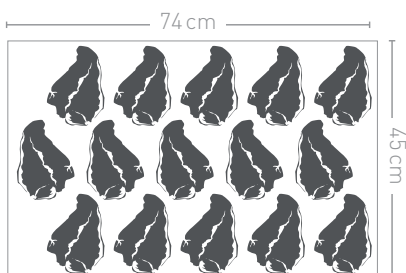
With 4 burners



Up to 16,6 kW

Rogue® 525-1

- 1 **WAVE™** porcelain coated cast iron cooking grids
- 2 **ACCU-PROBE™** built-in temperature gauge
- 3 4 stainless steel main burners (4.15 kW each)
- 4 Durable grill chamber made of cast aluminium
- 5 Folding side shelves
- 6 Dual-level stainless steel heat distribution system
- 7 **JETFIRE™** ignition system
- 8 Front Accessible drip pan
- 9 Grey knobs with integrated grey bezel
- 10 Modern black design
- 11 Large warming rack



EXCLUSIVE ACCESSORIES

(FURTHER ACCESSORIES
ON PAGE 62 ONWARDS)



Robust PVC polyester cover
protects against UV and dirt



Cast iron charcoal tray
with smoker option



Cast Iron Griddle



ROGUE ^{XT}
SERIES GAS BBQS

HOT UPGRADE FOR YOUR BBQ.



THE ROGUE® XT-MODELS WITH SIZZLE ZONE™



The Rogue® XT models are as well equipped as all other Rogue® models, but feature the almost legendary Napoleon® SIZZLE ZONE™ - the infrared side burner, that perfectly grills steaks with over 800°C.

The Rogue® XT is available in 4 sizes from the XT365 with 2 main burners up to the XT625 with 5 main burners. All models come with the extra high lid to accommodate larger joints of meat.

The XT series comes with porcelain coated cast iron cooking grids.



Rogue® XT365SIBPSS-1



Rogue® XT425SIBPSS-1



Rogue® XT525SIBPSS-1



Rogue® XT625SIBPSS-1

ROGUE^{XT}

SERIES GAS BBQS



0-800°C
exclusive infrared
SIZZLE ZONE™
technology



Capacity to cook for up to
11 people

With 3 burners

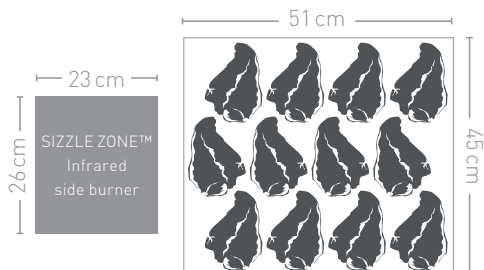
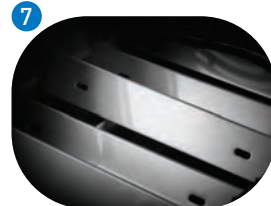
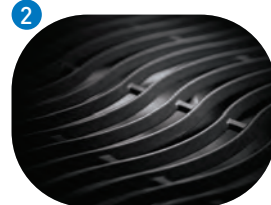


Up to 13.5 kW

ROGUE[®] XT FEATURES

Rogue[®] XT365SIB-1

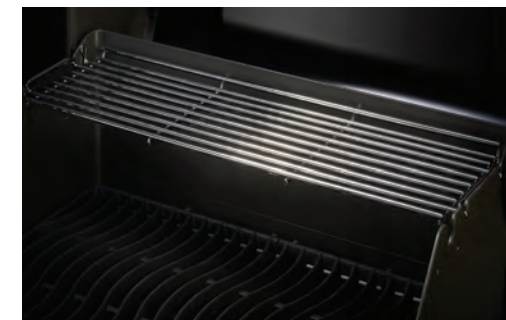
- 1 **SIZZLE ZONE™**
infrared side burner
- 2 **WAVE™** porcelain coated
cast iron cooking grids
- 3 **ACCU-PROBE™**
built-in temperature gauge
- 4 2 stainless steel main burners
(5.25 kW each)
- 5 Durable grill chamber made of
cast aluminium
- 6 Folding side shelves
- 7 Dual-level stainless steel
heat distribution system
- 8 **JETFIRE™** ignition system
- 9 Extra high lid
- 10 Grey knobs with
integrated grey bezel
- 11 Large warming rack



SIZZLE ZONE™
infrared side burner



Grey knobs with
integrated grey bezel



Large warming rack





0-800°C
exclusive infrared
SIZZLE ZONE™
technology



Capacity to cook for up to
13 people

With 4 burners

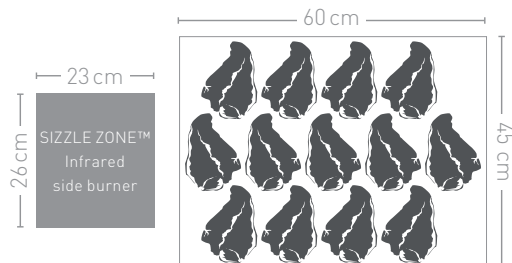
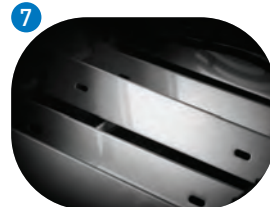
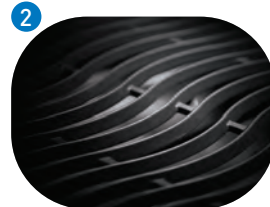


Up to 17.25 kW



Rogue® XT425SIB-1

- 1 SIZZLE ZONE™**
infrared side burner
- 2 WAVE™** porcelain coated
cast iron cooking grids
- 3 ACCU-PROBE™**
built-in temperature gauge
- 4** 3 stainless steel main burners
(4.75 kW each)
- 5** Durable grill chamber made
of cast aluminium
- 6** Folding side shelves
- 7** Dual-level stainless steel
heat distribution system
- 8 JETFIRE™** ignition system
- 9** Extra high lid
- 10** Grey knobs with integrated
grey bezel
- 11** Large warming rack



ROGUE^{XT}

SERIES GAS BBQS



0-800°C
exclusive infrared
SIZZLE ZONE™
technology



Capacity to cook for up to
15 people

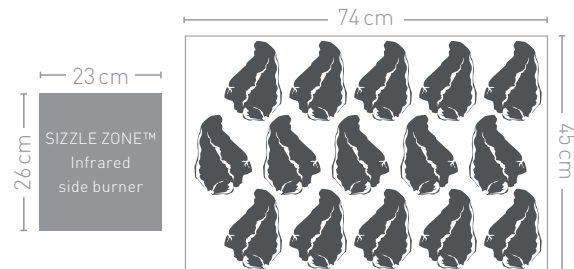
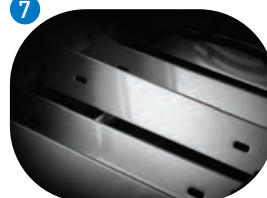
With 5 burners



Up to 19.6 kW

Rogue® XT525SIB-1

- 1** **SIZZLE ZONE™**
infrared side burner
- 2** **WAVE™** porcelain coated
cast iron cooking grids
- 3** **ACCU-PROBE™**
built-in temperature gauge
- 4** 4 stainless steel main burners
(4.15 kW each)
- 5** Durable grill chamber made of
cast aluminium
- 6** Folding side shelves
- 7** Dual-level stainless steel
heat distribution system
- 8** **JETFIRE™** ignition system
- 9** Extra high lid
- 10** Grey knobs with integrated
grey bezel
- 11** Large warming rack





0-800°C
exclusive infrared
SIZZLE ZONE™
technology



Capacity to cook for up to
17 people



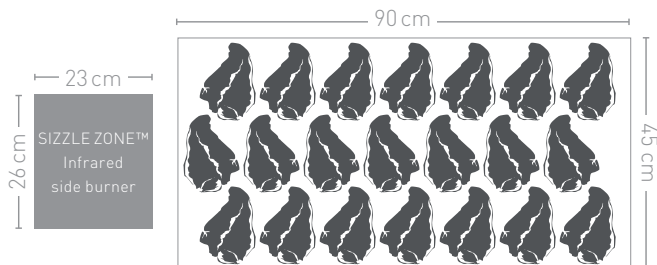
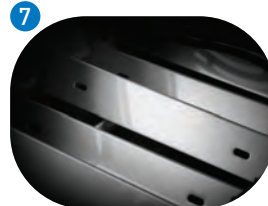
With 6 burners

Up to 23.75 kW



Rogue® XT625SIB-1

- 1** **SIZZLE ZONE™**
infrared side burner
- 2** **WAVE™** porcelain coated
cast iron cooking grids
- 3** **ACCU-PROBE™**
built-in temperature gauge
- 4** 5 stainless steel main burners
(4.15 kW each)
- 5** Durable grill chamber made of
cast aluminium
- 6** Folding side shelves
- 7** Dual-level stainless steel
heat distribution system
- 8** **JETFIRE™** ignition system
- 9** Extra high lid
- 10** Grey knobs with integrated
grey bezel
- 11** Large warming rack



ROGUE SE

SERIES GAS BBQS



**ALL YOU NEED:
ROGUE®
SPECIAL EDITION.**

THE ROGUE® SPECIAL EDITION WITH INFRARED SIDE AND REAR BURNER



The Special Edition of the Rogue® series, designated SE, even tops the SIZZLE ZONE™ equipped XT models. The three SE models not only feature a larger 3 tiled infrared side burner, but also an infrared rear burner.

This, in conjunction with the higher lid, ensures that the BBQs become true rotisserie champions. Whole chicken or suckling pig: a perfect grilling result is guaranteed.

And there's more. The three SE models also feature LED illuminated control knobs for late night entertaining and a handy bottle opener.



Rogue® SE425RSIBPSS-1



Rogue® SE525RSIBPSS-1



Rogue® SE625RSIBPSS-1

ROGUE^{SE}

SERIES GAS BBQS



Capacity to cook for up to
13 people

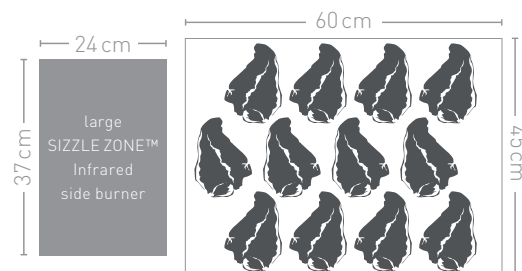
With 5 burners



Up to 23.75 kW

Rogue® SE425-1

- 1 Large SIZZLE ZONE™ infrared side burner
- 2 WAVE™ porcelain coated cast iron cooking grids (for black models)
- 3 ACCU-PROBE™ built-in temperature gauge
- 4 3 Stainless Steel main burners (4.75 kW each)
- 5 Rear rotisserie burner
- 6 Durable grill chamber made of cast aluminium
- 7 Side mounted condiment basket for extra storage room
- 8 Dual-level stainless steel heat distribution system
- 9 JETFIRE™ ignition system
- 10 Illuminated control knobs
- 11 Large side shelves (one fixed, one folding)





Capacity to cook for up to 15 people

With 6 burners

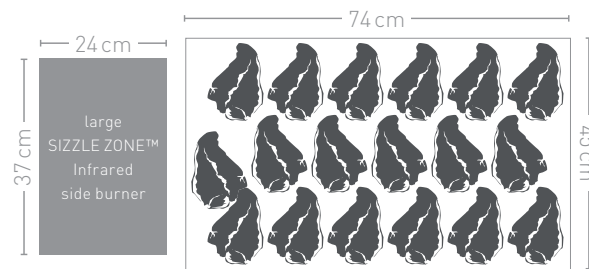


Up to 26.1 kW



Rogue® SE525-1

- 1 Large **SIZZLE ZONE™** infrared side burner
- 2 **WAVE™** stainless steel cooking grids (for stainless steel models)
- 3 **ACCU-PROBE™** built-in temperature gauge
- 4 4 Stainless Steel main burners (4.75 kW each)
- 5 Rear rotisserie burner
- 6 Durable grill chamber made of cast aluminium
- 7 Side mounted condiment basket for extra storage room
- 8 Dual-level stainless steel heat distribution system
- 9 **JETFIRE™** ignition system
- 10 Illuminated control knobs
- 11 Large side shelves (one fixed, one folding)



ROGUE^{SE}

SERIES GAS BBQS



0-800°C
exclusive infrared
SIZZLE ZONE™
technology



Capacity to cook for up to
17 people

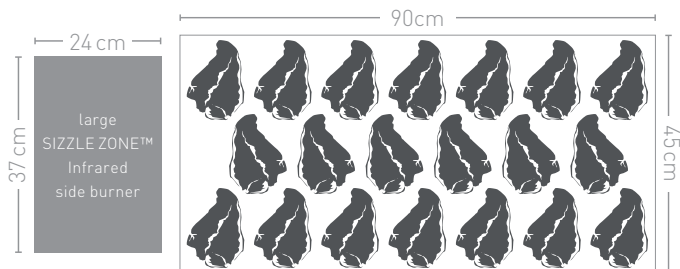
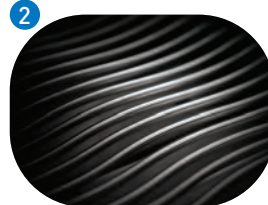


With 7 burners

Up to 30.25 kW

Rogue® SE625-1

- 1 Large **SIZZLE ZONE™** infrared side burner
- 2 **WAVE™** porcelain coated cast iron cooking grids (for black models)
- 3 **ACCU-PROBE™** built-in temperature gauge
- 4 5 Stainless Steel main burners (4.75 kW each)
- 5 Rear rotisserie burner
- 6 Durable grill chamber made of cast aluminium
- 7 Side mounted condiment basket for extra storage room
- 8 Dual-level stainless steel heat distribution system
- 9 **JETFIRE™** ignition system
- 10 Illuminated control knobs
- 11 Large side shelves (one fixed, one folding)



ROGUE® SE FEATURES



Extra high lid for rotisserie cooking

Infrared rear burner for rotisserie meals (optional kit available)



SIZZLE ZONE™ infrared side burner



Illuminated control knobs for safe operation and stylish barbecue fun till late at night

WAVE™ stainless steel cooking grids



Bottle opener on the side shelf



Prestige

SERIES GAS BBQS

PRACTICAL. PREMIUM. PRESTIGE®.



THE PRESTIGE® SERIES



High quality workmanship and top features are the main characteristics of the Prestige® series. These grills are built to last and have a very stylish appearance.

Equipped with a SIZZLE ZONE™ Infrared side burner as well as the infrared rear burner, the Prestige® provides enviable results for demanding barbecue friends. The SAFETY GLOW™ control knobs allow users to know which burners are on as they glow red when gas is on.

Both of these models come with a rotisserie included.



Prestige® 500-3



Prestige® 665

PRESTIGE® FEATURES



Infrared rear burner for rotisserie meals



SIZZLE ZONE™ infrared side burner



SAFETY GLOW™ control knobs with LED lighting



Folding side shelf (P500 only)





0-800°C
exclusive infrared
SIZZLE ZONE™
technology



Capacity to cook for up to
15 people

LIFT EASE™



Roll top lid

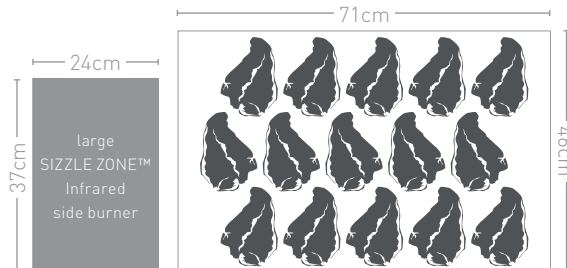
With 6 burners



Up to 25.7 kW

P500-3

- 1 **SIZZLE ZONE™** infrared side burner
- 2 **WAVE™** stainless steel cooking grids
- 3 Space-saving **LIFT EASE™** roll top lid with **ACCU-PROBE™** temperature gauge
- 4 4 large, durable stainless steel tube burners (4 kW each)
- 5 Stainless Steel rear rotisserie burner including rotisserie kit
- 6 Stainless steel side shelves with integrated condiment basket and utensil hooks. Folding right-hand shelf for space-saving storage
- 7 Stainless steel control panel with **JETFIRE™** ignition system
- 8 Large drip pan accessible from the front
- 9 also available in a natural gas version
- 10 **SAFETY GLOW™** control knobs for stylish barbecuing into the night
- 11 Locking **EASY ROLL™** casters



EXCLUSIVE ACCESSORIES (FURTHER ACCESSORIES ON PAGE 62 ONWARDS)



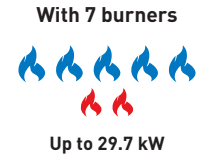
Robust PVC polyester cover
protects against UV and dirt



Cast iron charcoal tray
with smoker option

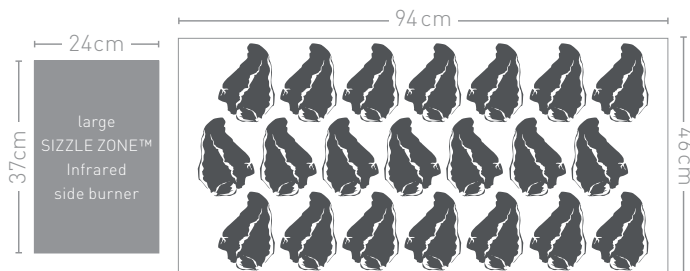


Shish Kebab set



P665

- 1 **SIZZLE ZONE™** infrared side burner
- 2 **WAVE™** stainless steel cooking grids
- 3 Space-saving **LIFT EASE™** roll top lid with **ACCU-PROBE™** temperature gauge
- 4 5 large, durable stainless steel tube burners (4 kW each)
- 5 Stainless Steel rear rotisserie burner **including** rotisserie kit
- 6 Stainless steel side shelves with integrated condiment basket and utensil hooks.
- 7 Stainless steel control panel with **JETFIRE™** ignition system
- 8 Large drip pan accessible from the front
- 9 **SAFETY GLOW™** control knobs for stylish barbecuing into the night
- 10 Locking **EASY ROLL™** casters



 Proudly Made in Canada

THE ULTIMATE IN GRILLING.



THE PRESTIGE PRO™ SERIES



Sophisticated technology and the perfect design are key features of the Prestige PRO™ series, with its chrome accents and quality stainless steel construction emphasizing the BBQ's elegant appearance. Yet the Napoleon® Prestige PRO™ BBQ isn't just good to look at: treat your guests to the perfect steak grilled on the Prestige PRO™, or create delicious meals using the rotisserie kit. In other words, the Prestige PRO™ series provides the ultimate barbecuing experience.



Prestige PRO® 500-3



Prestige PRO® 665-3



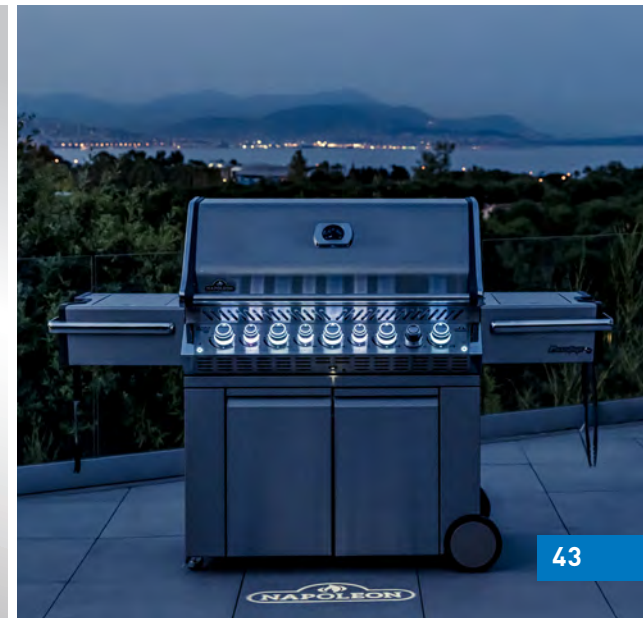
Prestige PRO® 825-3

PRESTIGE PRO™ FEATURES



SAFTEY GLOW™
control knobs
with coloured
LED lighting

Proximity lighting
for stylish
barbecuing
into the night





0-800°C
exclusive infrared
SIZZLE ZONE™
technology



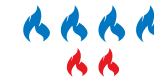
Capacity to cook for up to
15 people

LIFT EASE™

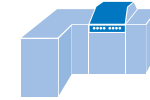


Roll top lid

With 6 burners



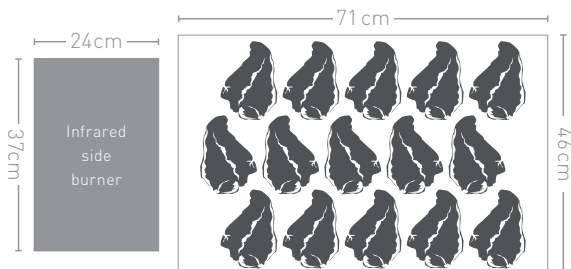
Up to 25.7 kW



Built In Grill Head available
for Oasis™ outdoor kitchens.

Prestige PRO™ 500-3

- 1 **SIZZLE ZONE™** infrared side burner
- 2 **WAVE™** 9.5mm stainless steel cooking grids
- 3 Stylish, high and space-saving **LIFT EASE™** roll top lid with gleaming chrome accents and **ACCU-PROBE™** built-in temperature gauge
- 4 4 large, durable stainless steel tube burners (4 kW)
- 5 **Including** heavy duty rotisserie kit
- 6 Premium stainless steel side shelves with integrated drinks holder and ice/marinade bucket with cutting board, chrome towel holder and utensil hooks
- 7 Stainless steel control panel with **JETFIRE™** ignition system
- 8 **SAFETY GLOW™** control knobs and interior lights for stylish barbecuing into the night
- 9 Large drip pan accessible from the front
- 10 Behind the soft-closing doors, you will find shelves, lighting, utensil hooks and a bottle opener
- 11 Locking **EASY ROLL™** casters
- 12 Also available in a natural gas version
- 13 Proximity lighting
- 14 The LED Spectrum **NIGHT LIGHT™** Control Knobs can change colour and brightness

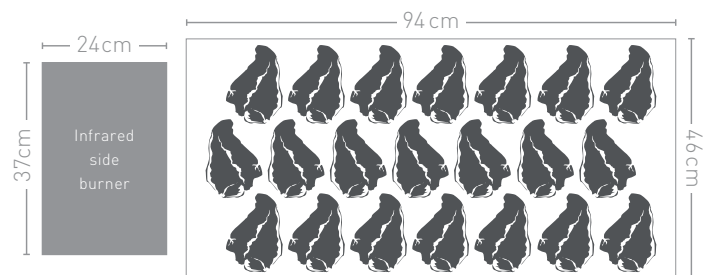


 Proudly Made in Canada



Prestige PRO™ 665-3

- 1 **SIZZLE ZONE™** infrared side burner
- 2 **WAVE™** 9.5mm stainless steel cooking grids
- 3 Stylish, high and space-saving **LIFT EASE™** roll top lid with gleaming chrome accents and **ACCU-PROBE™** built-in temperature gauge
- 4 5 large, durable stainless steel tube burners (4 kW)
- 5 Including rotisserie kit
- 6 Premium stainless steel side shelves with integrated drinks holder and ice/marinade bucket with cutting board, chrome towel holder and utensil hooks
- 7 Stainless steel control panel with **JETFIRE™** ignition system
- 8 **SAFETY GLOW™** control knobs and interior lights for stylish barbecuing into the night
- 9 Large drip pan accessible from the front
- 10 Behind the soft-closing doors, you will find shelves, lighting, utensil hooks and a bottle opener
- 11 Also available in a natural gas version
- 12 Integrated **wood chip smoker** tray pulls out for easy filling and has its own dedicated burner
- 13 Proximity lighting
- 14 The LED Spectrum **NIGHT LIGHT™** Control Knobs can change colour and brightness



Proudly Made in Canada



0-800°C
exclusive infrared
SIZZLE ZONE™
technology



Capacity to cook for up to
25 people

LIFT EASE™

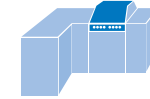


Roll top lid

With 10 burners



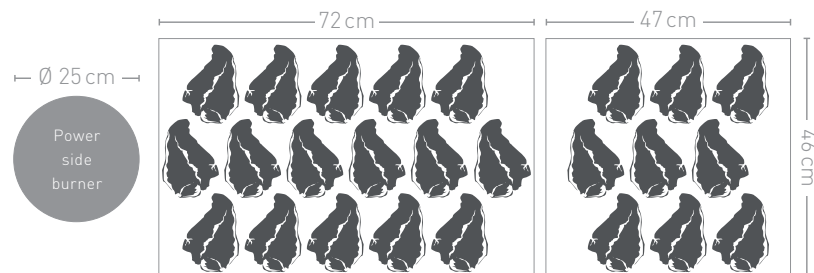
Up to 38.6 kW



Built In Grill Head available
for Oasis™ outdoor kitchens.

Prestige PRO™ 825-3

- 1 **WAVE™** 9.5mm stainless steel cooking grids
- 2 Up to 38.6 kW with 10 burners: 4 Stainless Steel main burners and integrated **wood chip smoker** tray pulls out for easy filling and has its own dedicated burner
- 3 Double **SIZZLE ZONE™** Area with a stainless steel tube burner to allow better distribution of heat
- 4 Stainless Steel rear rotisserie burner **including** rotisserie kit
- 5 Premium stainless steel side shelves with integrated drinks holder and ice/marinade bucket with cutting board, chrome towel holder and utensil hooks and utensil hooks
- 6 Stainless steel control panel with **JETFIRE™** ignition system
- 7 **SAFETY GLOW™** control knobs and interior lights for stylish barbecuing into the night
- 8 Double large drip pan accessible from the front
- 9 Behind the soft-closing doors, you will find shelves, lighting, utensil hooks and a bottle opener
- 10 **Innovative two-stage power burner** with two levels of intensity: one round, central infrared burner and an outer burner allow for diverse barbecuing methods. The reversible cast iron cooking grid provides one side suitable for a round wok, while the other side can be used for flat griddles and pans. Its shape ensures consistent barbecuing results.
- 11 Proximity lighting
- 12 The LED Spectrum **NIGHT LIGHT™** Control Knobs can change colour and brightness



 Proudly Made in Canada

EXCLUSIVE ACCESSORIES
(FURTHER ACCESSORIES
ON PAGE 62 ONWARDS)



Robust PVC polyester cover
protects against UV and dirt



Stainless steel Rotisserie Basket



Rectangle Baking Pizza Stone





**BARBECUING FUN
ON THE GO.**

TRAVELQ SERIES

Genuine, infinite freedom: with the TravelQ™ series BBQs, you can enjoy barbecued food wherever you like! All TravelQ™ models have the WAVE™ cooking grids in porcelain coated cast iron, which ensures the sustained, even distribution of heat. Convenient handling, sophisticated transport solutions and efficient barbecuing performance set new standards, meaning your portable gas BBQ will become a reliable partner for every adventure.



TravelQ™ PRO285X



TravelQ™ PRO285



TravelQ™ PRO285E



TravelQ™ PRO285 Stand



TravelQ™ 240

PORTABLE GAS BBQ FEATURES

JETFIRE™
ignition system



Porcelain coated cast iron **WAVE™** cooking grids

Two stainless steel burners for direct or indirect cooking (excl. TQ240/PRO285E)



ACCU-PROBE™
built-in temperature gauge

PORTABLE BBQS



Capacity to cook for up to
7 people

With 1 burner



Up to 2.6 kW

EXCLUSIVE ACCESSORIES
(FURTHER ACCESSORIES
ON PAGE 62 ONWARDS)



3-Piece TravelQ™
stainless steel BBQ Toolkit



Pizza Stone for the TravelQ™ Series

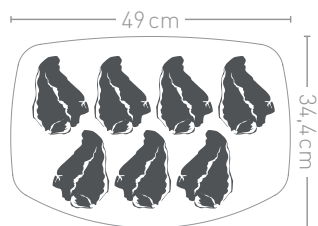


PRO Stainless Steel Smoker Pipe



TravelQ 240

- 1 Particularly compact design, easy assembly and light handling
- 2 Single Stainless Steel burner up to 2.6 kW
- 3 Porcelain coated cast iron **WAVE™** cooking grids
- 4 **JETFIRE™** ignition system
- 5 Folding legs for easy storage
- 6 Drip pan accessible from the front
- 7 Lockable lid for easy transportation





Capacity to cook for up to
9 people

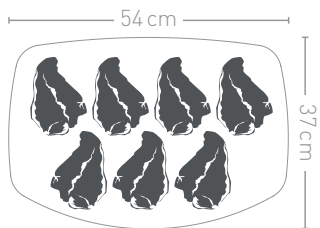
With 2 burners



Up to 4.1 kW

TravelQ™ PRO285

- 1 Particularly compact design, easy assembly and light handling
- 2 Two stainless steel burners
- 3 **ACCU-PROBE™** built-in temperature gauge
- 4 Durable, high lid in cast aluminium, able to accommodate larger joints e.g. a whole chicken
- 5 Porcelain coated cast iron **WAVE™** cooking grids
- 6 Ergonomic **Cool Touch handle**
- 7 Side handles for easy lifting
- 8 0.9 m hose and regulator for gas bottles of 5 and/ or 8 kg
- 9 **Optional stand module available**



TravelQ™ PRO285X

- 10 **TravelQ PRO285X** mounted on a folding cart
- 11 Sets up with just one hand and locks into place
- 12 Stable hooks for hanging BBQ utensils and towels
- 13 Large wheels for easy manoeuvrability and stable scissor-cart frame made of powder-coated steel



Up to 4.1 kW

EXCLUSIVE ACCESSORIES

(FURTHER ACCESSORIES
ON PAGE 62 ONWARDS)



Robust PVC polyester cover
protects against UV and dirt



Rotisserie with Pizza Shroud for TravelQ™



Warming rack





**ELECTRIC POWER FOR
A REAL BBQ TREAT.**

THE COMPACT ELECTRIC BBQ



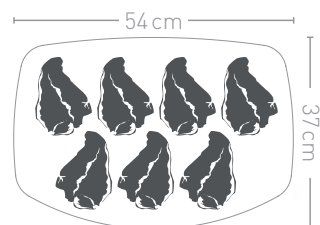
Capacity to cook for up to
9 people



The new TravelQ PRO285E underlines the fact that the days when electric barbecues were deemed to be under-performing are over. With its powerful 2,200 watts, the specially insulated lid and the enamelled grill tub up to 300°C are achieved on the grid - enough heat to provide grilled food with delicious sear marks. The electric TravelQ represents a real enrichment for every balcony or provides areas of application where gas / charcoal is not possible for unadulterated barbecue fun. The simple cleaning also contributes to this: the heating spiral and the enamelled tub insulation insert can be easily removed.

TravelQ PRO285E

- 1 Ultra-compact design for easy handling and comfort
- 2 Removable heating coil and grill pan insulator insert for easy cleaning
- 3 **ACCU-PROBE™** built-in temperature gauge
- 4 Durable, high **WEATHERGUARD™** lid in cast aluminium, able to accommodate larger joints e.g. a whole chicken
- 5 Porcelain coated cast iron **WAVE™** cooking grids
- 6 Side handles for easy lifting
- 7 Sideways accessible grease drip tray



TravelQ PRO285-Stand

- 8 **Optional stand module**
- 9 With removable side shelves
- 10 Stainless steel condiment holder with integrated bottle opener
- 11 Sturdy hooks to hang BBQ tools and other accessories
- 12 Elegant front panel conceals the propane bottle



The **TravelQ PRO285** stand is a perfect accessory for the PRO285 and PRO285E



**THE BEGINNINGS
OF THE BBQ.**



NK18K-LEG



NK22K-LEG-2



PRO22K-LEG-2



PRO22K-CART-2



Whether you're a BBQ amateur or pro, cooking on charcoal has always had a certain appeal. Napoleon's range of charcoal BBQs has a model to suit every requirement, from the tempting, extra-large Charcoal Professional model in stainless steel to the much-loved Kettle BBQ series with its sophisticated details.



PRO 605 CSS

CHARCOAL STANDARD FEATURES

ACCU-PROBE™
built-in
temperature gauge



Large, removable ash
catcher in heavy-duty
steel



Cast iron cooking grid
on the PRO22K-LEG
and PRO22K-CART,



Corner hinged lid
(PRO22K-LEG and
PRO22K-CART)





Capacity to cook for up to
12 people

PRO22K-LEG-2

- 1 **ACCU-PROBE™** temperature gauge and rust-proof air vent
- 2 Lid and bowl made of porcelain enameled steel
- 3 **Air vent** in stainless steel
- 4 Large, removable ash catcher in heavy-duty steel
- 5 4 Stainless Steel legs and 2 large weatherproof wheels with rubber grip
- 6 Height adjustable porcelain coated cast iron cooking grid
- 7 Corner hinged hard-wearing porcelain enamel lid and bown



EXCLUSIVE ACCESSORIES (FURTHER ACCESSORIES ON PAGE 62 ONWARDS)



Robust PVC polyester cover
protects against UV and dirt



Charcoal Baskets



Foldable Triangular
Charcoal starter



Capacity to cook for up to
12 people

EXCLUSIVE ACCESSORIES
(FURTHER ACCESSORIES
ON PAGE 62 ONWARDS)



Napoleon® Blackstone Charcoal
or Premium Briquettes



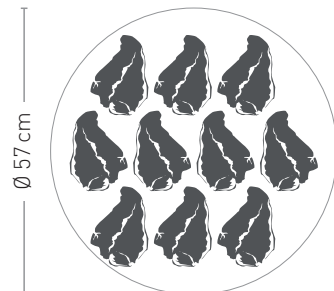
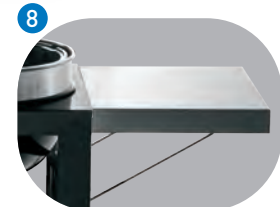
Charcoal Tool Hanger



Rotisserie with Pizza Shroud for
NK22K / PRO22K

PRO22K-CART-2

- 1 **ACCU-PROBE™** temperature gauge and rust-proof air vent
- 2 Hard-wearing porcelain enamel lid and bowl
- 3 **Air vent** in stainless steel
- 4 Large, removable ash catcher in heavy-duty steel
- 5 2 lockable castors and 2 weatherproof wheels
- 6 Height adjustable porcelain coated cast iron cooking grid
- 7 Corner lid hinge ensures safe opening and closing of the lid
- 8 Stainless Steel folding side shelf for extra preparation area



Ø 57 cm



Capacity to cook for up to
13 people

LIFT EASE™



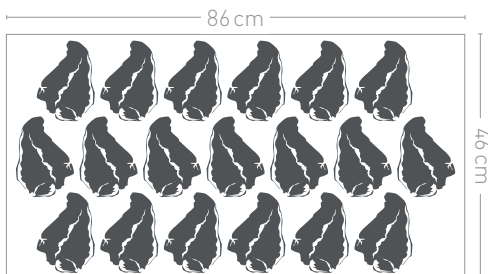
Roll top lid

PRO 605 CSS

- 1 Space-saving **LIFT EASE™** stainless steel roll top lid with **ACCU-PROBE™** temperature gauge
- 2 Exclusive rear charcoal burner for optional rotisserie kit
- 3 Air vents to regulate the optimum burn rate for barbecuing at high temperatures, cooking slowly or smoking
- 4 Loading door allows charcoal to be easily added even during barbecuing and facilitates cleaning
- 5 Solid stainless steel construction
- 6 Height-adjustable charcoal bed to regulate temperatures
- 7 Integrated utensil holders

Optional:

Commercial quality
Rotisserie-Kit

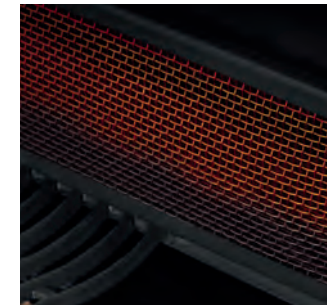


PRO 605 CSS STANDARD FEATURES

Loading door
for charcoal



Charcoal rear
burner for
rotisserie meals



6-level adjustable
charcoal bed



Sliding air vents for
optimum air supply





BBQ ACCESSORIES



3-in-1 BBQ Cleaner, 10234, BBQ Protector, 10235, BBQ Power-Cleaner, 10236



Abrasive Scrubber 62003



Grill Brush, stainless steel Bristles with Scraper 62052



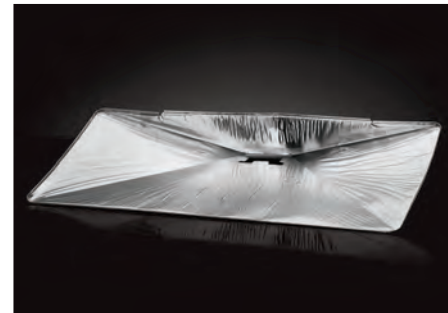
**Grill Brush, stainless steel Bristles 62054
Grill Brush, brass Bristles 62056**



**Grill Brush, stainless steel Bristles 62057
Grill Brush, brass Bristles 62058**



Grill Brush with Wooden Handle, Brass and stainless steel 62028 + 62118



Drip tray liners, pack of 3 for 425, 62020, 525, 62021, 625, 62022 and P/PRO500, 62023



Drip Tray Liner for TravelQ™-Series 62006



**Pack of Trays (5)
14,7 x 12,2 cm 62007 36 x 19,7 cm 62008**



**Multi-Use Touch screen gloves
L, 62142, XL, 62143**



Grid Lifter 62121



Cover 61xxx



Stainless steel 16-inch Locking Tong
55015



3-Piece TravelQ™ stainless steel BBQ Toolkit
70024



2-piece Toolset
70032



2-piece PRO stainless steel grill Toolset
70033



3-piece PRO stainless steel grill Toolset
70034



3 PC Napoleon President Edition Toolset
70036



PRO Pizza Spatula
70003



PRO Stainless Steel Spatula with Bottle Opener, 70010



Stainless Steel Wide Spatula
70017



Flexible Spatula
70040



High-End Precision Tongs
55024



Spatutong
55019

BBQ ACCESSORIES



Stainless Steel Dual Chamber Rotisserie Rack, 64005



Stainless steel Rotisserie Basket 64000



Rotisserie Shish Kebab Wheel 64008



8pc Multi Functional Skewers 70015



TravelQ Rotisserie 69283



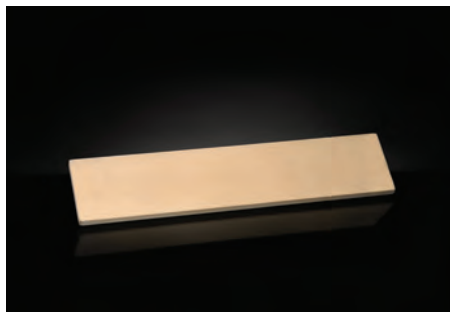
Rotisserie for NK22K / PRO22K 69223



Rocking Pizza Cutter 55209



Gas grill Pizza Shroud 71200



Warming Rack Pizza / Baking Stone, 59.5 cm x 13.5 cm, 70044



Rectangular Pizza Stone, 51 x 34 cm 70008



Pizza Stone for the TravelQ™ Series, ø 25 cm (Set of 2) 70000



PRO Pizza Stone with Pizza Wheel 90002



Napoleon® Blackstone Briquettes, 10KG
67104



Napoleon® Blackstone Premium Lumpwood Charcoal, 7KG, 67105



Coconut Charcoal Briquettes, 10KG
67301



Ecological Fire Starter, 100 pcs
67050



Foldable Triangular Charcoal Chimney
67801



Charcoal Tray
67732



Charcoal Tray
67400



Wood chips in different flavors
670xx



Smoker Box
67013



PRO Stainless Steel Smoker Pipe
67011



Charcoal Tool Hanger
65100



Wood chips in different flavors
670xx

BBQ ACCESSORIES



Cast Iron Sauce Pan, ø18cm, 2L
56051



Cast Iron Dutch Oven, ø28cm, 6L
56059



Ceramic Roasting Pan with Chicken Roaster
70150



Multifunctional Grilling rack for P/PRO 500, 71500, and R425, 71501



Warming Rack for PRO285 + Kettle BBQ
71286, 71022



Drop-in Pan for Rogue/Prestige/PRO
56055



Windshield for SIZZLE ZONE™ (small) with 4 skewers, 71302



Windshield for SIZZLE ZONE™ (large) with 4 skewers, 71301



Stainless steel Wok 12"
70028



Cast Iron Griddle for 365 series, 56365, 425/525-1/625, 56425, P/PRO series, 56040



Cast Iron Griddle for TravelQ
56080



Cast Iron Meat Press
56056



Gourmet Burger Press Kit
70060



Meat Lovers Starter Kit
90001



Expandable Rib Holder
56012



PRO Infusion Roaster
56067



Stainless Steel Wok Topper
56027



Heat Resistant BBQ Glove (1 Glove)
62145



Grill glove made of leather (1 pair)
62147



PRO Cutting Board with stainless steel Bowls 70012



Side Shelf Bamboo Cutting Board
70113



Rogue Condiment Tray
26060



Silicon Side Shelf Mat
70122






Grill mats
120 x 80 cm 68001, 230 x 90 cm 68002

BBQ MODEL OVERVIEW

			
FREESTYLE 365	FREESTYLE 365 SIB	FREESTYLE 425	FREESTYLE 425 SIB
Output kW: 12	Output kW: 15	Output kW: 13.6	Output kW: 16.6
Burners: 3	Burners: 3 + 1	Burners: 4	Burners: 4 + 1
Total length: 124 cm	Total length: 124 cm	Total length: 132 cm	Total length: 132 cm
Total depth: 64 cm	Total depth: 64 cm	Total depth: 64 cm	Total depth: 64 cm

FREESTYLE-SERIES

		
ROGUE® 365-1	ROGUE® 425-1	ROGUE® 525-1
Output kW: 10.5	Output kW: 14.25	Output kW: 19
Burners: 2	Burners: 3 + 1	Burners: 4
Total length: 122 cm	Total length: 130 cm	Total length: 144 cm
Total depth: 64 cm	Total depth: 64 cm	Total depth: 64 cm

ROGUE®-SERIES

FEATURES	FREESTYLE™ SERIES				ROGUE® SERIES		
	365	365 SIB	425	425 SIB	365-1	425-1	525-1
BBQ/lid colour	gt	gt	gt	gt	bk	bk	bk
Stainless steel burner/Main burner	3	3	4	4	2	3	4
Infrared SIZZLE ZONE™ main burner							
Infrared SIZZLE ZONE™ side burner		•		•			
Range side burner							
Stainless steel infrared rear burner							
JETFIRE™ ignition system	•	•	•	•	•	•	•
LIFT EASE™ roll top lid							
SAFETY GLOW™ control knobs							
Illuminated control knobs							
Interior light							
Folding side shelves	2	1	2	1	2	2	2
9.5 mm stainless steel WAVE™ cooking grid							
7 mm stainless steel WAVE™ cooking grid							
WAVE™ cast iron cooking grid	•	•	•	•	•	•	•
WAVE™ cast stainless steel cooking grid							
Available as natural gas model (only stainless steel)							
Available as a built-in model							
Warranty	+	+	+	+	++	++	++
OUTPUT (KW)							
Main tube burner	12	12	13,6	13,6	10,5	14,25	19
Main infrared burner							
Side burner		3,0		3,0			
Infrared rear burner							
Smoker tray burner							
Warming burner							
Total	12	15	13,6	16,6	10,5	14,25	19
DIMENSIONS							
Main grill area (cm)	51 x 45	51 x 45	60 x 45	60 x 45	51 x 45	60 x 45	74 x 45
Side burner (cm)							
Total length (cm) with raised/folded side shelves	124 / 76	124 / 100	132 / 84	132 / 108	122 / 82	130 / 89	144 / 104
Total depth (cm)	64	64	64	64	64	64	64
Total height (cm) with closed/open lid	116 / 154	116 / 154	116 / 154	116 / 154	122 / 160	122 / 160	122 / 160
Weight (kg)	47	50	52	55	51	56	64
ACCESSORIES							
Cover, side shelves raised	61444	61444	61444	61444	61365	61425	61527
Cover, side shelves folded down					61366	61426	
Cast iron griddle	56425	56425	56425	56425	56365	56425	56425
Rotisserie	69303	69303	69303	69303	69913	69913	69913

BBQ MODEL OVERVIEW



ROGUE® XT365SIB-1

Output kW: 13.5
 Burners: 2 + 1
 Total length: 122 cm
 Total depth: 64 cm



ROGUE® XT425SIB-1

Output kW: 17.25
 Burners: 3 + 1
 Total length: 130 cm
 Total depth: 64 cm



ROGUE® XT525SIB-1

Output kW: 19.6
 Burners: 4 + 1
 Total length: 154 cm
 Total depth: 64 cm



ROGUE® XT625SIB-1

Output kW: 23.75
 Burners: 5 + 1
 Total length: 168 cm
 Total depth: 64 cm



ROGUE® SE425-1

Output kW: 23.75
 Burners: 3 + 2
 Total length: 140 cm
 Total depth: 64 cm



ROGUE® SE525-1

Output kW: 26.1
 Burners: 4 + 2
 Total length: 154 cm
 Total depth: 64 cm



ROGUE® SE625-1

Output kW: 30.25
 Burners: 5 + 2
 Total length: 168 cm
 Total depth: 64 cm

ROGUE® -XT-SERIES

ROGUE® -SE-SERIES



PRESTIGE® 500-3

Output kW: 25.7
 Burners: 4 + 2
 Total length: 168 cm
 Total depth: 67 cm



PRESTIGE® 665

Output kW: 29.7
 Burners: 5 + 2
 Total length: 190 cm
 Total depth: 67 cm



PRESTIGE PRO™ 500-3

Output kW: 25.7
 Burners: 4 + 2
 Total length: 169 cm
 Total depth: 65 cm



PRESTIGE PRO™ 665-3

Output kW: 31
 Burners: 5 + 3
 Total length: 195 cm
 Total depth: 65 cm



PRESTIGE PRO™ 825-3

Output kW: 38.6
 Burners: 6 + 4
 Total length: 239 cm
 Total depth: 64 cm

PRESTIGE® SERIES

PRESTIGE PRO™ SERIES

FEATURES	ROGUE® XT SERIES				ROGUE® SE SERIES			PRESTIGE®		PRESTIGE PRO™ SERIES		
	XT 365SIB-1	XT 425SIB-1	XT 525 SIB-1	XT 625SIB-1	SE425-1	SE 525-1	SE625-1	P500-3	P665	PRO 500 RSIB-3	PRO 665 RSIB-3	PRO 825 RSIB-3
BBQ/lid colour	ss	ss	ss	ss	ss	ss	ss	ss	ss	ss	ss	ss
Stainless steel burner/Main burner	2	3	4	5	3	4	5	4	5	4	5	4
Infrared SIZZLE ZONE™ main burner												2
Infrared SIZZLE ZONE™ side burner	•	•	•	•	•	•	•	•	•	•	•	
Range side burner												
Stainless steel infrared rear burner					•	•	•	•	•	•	•	•
JETFIRE™ ignition system	•	•	•	•	•	•	•	•	•	•	•	•
LIFT EASE™ roll top lid								•	•	•	•	•
SAFETY GLOW™ control knobs								•	•	•	•	•
Illuminated control knobs					•	•	•					
Interior light								•	•	•	•	•
Folding side shelves	2	2	2	2	1	1	1	1				
9.5 mm stainless steel WAVE™ cooking grid										•	•	•
7 mm stainless steel WAVE™ cooking grid					•	•	•	•	•			
WAVE™ cast iron cooking grid	•	•	•	•								
WAVE™ cast stainless steel cooking grid												
Available as natural gas model (only stainless steel)								•		•	•	•
Available as a built-in model										•	•	•
Warranty	++	++	++	++	++	++	++	+++	+++	+++	+++	+++
OUTPUT (KW)												
Main tube burner	10,5	14,25	16,6	20,75	14,25	16,6	20,75	16	20	16	19	15,2
Main infrared burner												7,6
Side burner	3,0	3,0	3,0	3,0	4,5	4,5	4,5	4,0	4,0	4,0	4,0	5,3
Infrared rear burner					5,0	5,0	5,0	5,7	5,7	5,7	5,5	5,5
Smoker tray burner											2,5	2,5
Warming burner												2,5
Total	13,5	17,25	19,6	23,75	23,75	26,1	30,25	25,7	29,7	25,7	31	38,6
DIMENSIONS												
Main grill area (cm)	51 x 45	60 x 45	74 x 45	90 x 45	60 x 45	74 x 45	90 x 45	71 x 46	94 x 46	71 x 46	94 x 46	(72+47) x 46
Side burner (cm)	23 x 26	23 x 26	23 x 26	23 x 26	24 x 37	24 x 37	24 x 37	24 x 37	24 x 37	24 x 37	24 x 37	Ø 25
Total length (cm) with raised/folded side shelves	122/82	130/89	154/103	168/117	140/114	154/127	168/142	168/137	190	169	195	239
Total depth (cm)	64	64	64	64	64	64	64	67	67	65	65	64
Total height (cm) with closed/open lid	123/160	123/160	123/160	123/160	123/160	123/160	123/160	127/147	127/147	131/144	130/142	130/142
Weight (kg)	57	60	70	85	66	75	90	89	110	109	150	200
ACCESSORIES												
Cover, side shelves raised	61365	61427	61527	61627	61427	61527	61627	61500	61665	61500	61665	61825
Cover, side shelves folded down	61366	61426										
Cast iron griddle	56365	56425	56425	56425	56425	56365	56425	56040	56040	56040	56040	56040
Rotisserie	69913	69913	69913	69913	69913	69913	69913	69213	69633	69213	69633	69533

BBQ MODEL OVERVIEW



TRAVELQ™ PRO285X

Output kW:	4.1
Burners:	2
Total length:	112 cm
Total depth:	52 cm



FREESTYLE 425 DSIB

Output kW:	16.6
Burners:	4 + 1
Total length:	132 cm
Total depth:	64 cm



ROGUE® SE425-1

Output kW:	23.75
Burners:	3 + 2
Total length:	140 cm
Total depth:	64 cm



PRESTIGE® 500-3

Output kW:	25.7
Burners:	4 + 2
Total length:	168 cm
Total depth:	67 cm



TRAVELQ™ 240

Output kW:	2.6
Burners:	1
Total length:	49 cm
Total depth:	34,3 cm



TRAVELQ™ PRO285

Output kW:	4.1
Burners:	2
Total length:	74 cm
Total depth:	47 cm

PHANTOM™-SERIES

PORTABLE BBQS



TRAVELQ™ PRO285E

Output kW:	2.2
Heater coil:	1
Total length:	74 cm
Total depth:	47 cm



TRAVELQ™ PRO 285X

Output kW:	4.1
Burners:	2
Total length:	124 cm
Total depth:	51 cm



NK18K-LEG-1

Diameter:	47 cm
Total length:	59 cm
Total depth:	51 cm



NK22K-LEG-2

Diameter:	57 cm
Total length:	70 cm
Total depth:	59 cm



PRO22K-LEG-2

Diameter:	57 cm
Total length:	72 cm
Total depth:	59 cm



PRO22K-CART-2

Diameter:	57 cm
Total length:	72 cm
Total depth:	59 cm



PRO 605 CSS

Diameter:	57 cm
Total length:	72 cm
Total depth:	59 cm

PORTABLE BBQS

CHARCOAL BBQS

FEATURES	PHANTOM™ SERIES				PORTABLE BBQS				CHARCOAL BBQS				
	PRO 285 X	425 SIB	SE425-1	P500-3	TQ 240	PRO 285	PRO 285 X	PRO 285 E	NK18K-LEG-1	NK22K-LEG-2	PRO22K-LEG-2	PRO22K-CART-2	PRO605CSS
BBQ/lid colour	ph	ph	ph	ph	bk	bk	bk	bk	bk	bk	bk	bk	ss
Stainless steel burner/Main burner	2	4	3	4	1	2	2						
Infrared SIZZLE ZONE™ main burner													
Infrared SIZZLE ZONE™ side burner		•	•	•									
Range side burner													
Stainless steel infrared rear burner			•	•									
JETFIRE™ ignition system		•	•	•	•								
LIFT EASE™ roll top lid				•									•
SAFETY GLOW™ control knobs				•									
Illuminated control knobs			•										
Interior light													
Folding side shelves		1	1	1								•	
9.5 mm stainless steel WAVE™ cooking grid													
7 mm stainless steel WAVE™ cooking grid			•										
WAVE™ cast iron cooking grid	•	•			•	•	•	•	◦	◦	•	•	•
WAVE™ cast stainless steel cooking grid				•									
Available as natural gas model (only stainless steel)				•									
Available as a built-in model													
Warranty	+	+	++	+++	+	+	+	+	+	+	+	+	++
OUTPUT (KW)													
Main tube burner	4,1	13,6	14,25	16	2,6	4,1	4,1	2,2					
Main infrared burner													
Side burner		3,0	4,5	4,0									
Infrared rear burner			5,0	5,7									
Smoker tray burner													
Warming burner													
Total	4,1	16,6	23,75	25,7	2,6	4,1	4,1	2,2					
DIMENSIONS													
Main grill area (cm)	54 x 37	60 x 45	60 x 45	71 x 46	49 x 34,3	54 x 37	54 x 37	54 x 37	∅ 47	∅ 57	∅ 57	∅ 57	86 x 46
Side burner (cm)			24 x 37	24 x 37									
Total length (cm) with raised/folded side shelves	112	132/108	140/114	168 / 137	52	74	112	74	52	70	72	114/80	171
Total depth (cm)	52	64	64	67	56	47	52	47	56	59	59	73	63
Total height (cm) with closed/open lid	101/131	116/154	123/160	127/147	37	38/64	101/131	38 x 64	92	112	103/162	106/152	121/151
Weight (kg)	23	55	66	89	11	16	23	17	11	20	30	43	100
ACCESSORIES													
Cover, side shelves raised	61288	61444	61427	61500			61288						61605
Cover, side shelves folded down	61286					61286	61286	61286	61912	61910	61910	61911	
Cast iron griddle	56080	56425	56425	56040		56080	56080	56080					56040
Rotisserie	69283	69303	69913	69213		69283	69283	69283		69223	69223	69223	69333

QUALITY AND WARRANTY



President's Limited Lifetime Warranty

For Prestige®/PRO™

Lifetime

(Aluminium castings/stainless steel base, stainless steel lid, Porcelain enamel lid, stainless steel cooking grids)

10 years full coverage, plus 50% off for life

(stainless steel tube burners, Porcelain-coated cast iron cooking grids)

5 years full coverage, plus 50% off for life

(stainless steel sear plates, stainless steel infrared rotisserie burner, Ceramic infrared burners (excluding screen))

2 years

(All other parts except batteries and bulbs)



15 Years Limited Warranty

For Rogue® and PR0605CSS

15 years

(Aluminium castings/stainless steel base, stainless steel lid, Porcelain enamel lid, stainless steel cooking grids)

10 years full coverage, plus 50% off until the 15th year

(stainless steel tube burners)

5 years full coverage, plus 50% off until the 15th year

(stainless steel sear plates, Porcelain-coated cast iron cooking grids, Ceramic infrared burners (excluding screen))

2 years

(All other parts except batteries and bulbs)



10 Year Limited Warranty

For TravelQTM 285 Series and FREESTYLE™
(incl. PRO285/PRO285E)

10 years

(Aluminium castings/stainless steel base, stainless steel lid, Porcelain enamel lid)

5 years full coverage, plus 50% off until the 10th year

(Cast aluminium lid, stainless steel tube burners, Porcelain-coated cast iron cooking grids)

2 years

(All other parts except batteries and bulbs)



10 Year Limited Warranty

For Charcoal Kettle Series

10 years

(Porcelain enamel lid and bowl)

5 years full coverage, plus 50% off until the 10th year

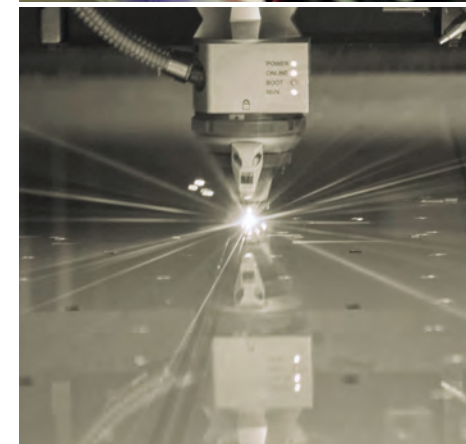
(Air control system)

3 years full coverage, plus 50% off until the 10th year

(Chrome plated cooking grids and for Porcelain-coated cooking grids)

2 years

(All other parts)



PRESIDENT'S LIMITED LIFETIME WARRANTY – FOR PRESTIGE®/PRO™

10 YEAR | BURNER REPLACEMENT
+50% PARTS COVERAGE FOR LIFE

Stainless steel burners are warranted for full replacement for 10 years. Afterward replacement parts are available for 50% off the retail price for the remainder of the warranty period.

10 YEAR | PORCELAINIZED CAST IRON COOKING GRIDS REPLACEMENT
+50% PARTS COVERAGE FOR LIFE

Porcelainized cast iron cooking grids are warranted for full replacement for 10 years. Afterward replacement parts are available for 50% off the retail price for the remainder of the warranty period.

5 YEAR | STAINLESS STEEL SEAR PLATES REPLACEMENT
+50% PARTS COVERAGE FOR LIFE

Stainless steel sear plates are warranted for full replacement for 5 years. Afterward replacement parts are available for 50% off the retail price for the remainder of the warranty period.

5 YEAR | STAINLESS STEEL INFRARED ROTISSERIE BURNER REPLACEMENT
+50% PARTS COVERAGE FOR LIFE

Stainless steel infrared rotisserie burners are warranted for full replacement for 5 years. Afterward replacement parts are available for 50% off the retail price for the remainder of the warranty period.

15 YEAR LIMITED WARRANTY – FOR ROGUE® AND PRO605CSS

10 YEAR | BURNER REPLACEMENT
+5 YEAR 50% PARTS COVERAGE

Stainless steel burners are warranted for full replacement for 10 years. Afterward replacement parts are available for 50% off the retail price for the remainder of the warranty period.

5 YEAR | STAINLESS STEEL SEAR PLATES REPLACING GRIDS
+10 YEAR 50% PARTS COVERAGE

Stainless steel sear plates are warranted for full replacement for 5 years. Afterward replacement parts are available for 50% off the retail price for the remainder of the warranty period.

5 YEAR | PORCELAINIZED CAST IRON COOKING GRIDS REPLACEMENT
+10 YEAR 50% PARTS COVERAGE

Porcelain-coated cast iron cooking grids are warranted for full replacement for 5 years. Afterward replacement parts are available for 50% off the retail price for the remainder of the warranty period.

5 YEAR | CERAMIC INFRARED BURNER REPLACEMENT
+10 YEAR 50% PARTS COVERAGE

Ceramic infrared burners (excluding screen) are warranted for full replacement for 5 years. Afterward replacement parts are available for 50% off the retail price for the remainder of the warranty period.

10 YEAR LIMITED WARRANTY – FOR TRAVELQ™ 285 SERIES AND FREESTYLE™ (INCL. PRO285/PRO285E)

5 YEAR | PAINTED STEEL LID REPLACEMENT
+5 YEAR 50% PARTS COVERAGE

Painted steel lids are warranted for full replacement for 5 years. Afterward replacement parts are available for 50% off the retail price for the remainder of the warranty period.

5 YEAR | BURNER REPLACEMENT
+5 YEAR 50% PARTS COVERAGE

Stainless steel burners are warranted for full replacement for 5 years. Afterward replacement parts are available for 50% off the retail price for the remainder of the warranty period.

5 YEAR | PORCELAINIZED CAST IRON COOKING GRIDS REPLACEMENT
+5 YEAR 50% PARTS COVERAGE

Porcelain-coated cast iron cooking grids are warranted for full replacement for 5 years. Afterward replacement parts are available for 50% off the retail price for the remainder of the warranty period.

3 YEAR | STAINLESS STEEL OR PORCELAIN SEAR PLATES REPLACEMENT
+7 YEAR 50% PARTS COVERAGE

Stainless steel sear plates are warranted for full replacement for 3 years. Afterward replacement parts are available for 50% off the retail price for the remainder of the warranty period.

10 YEAR LIMITED WARRANTY – FOR CHARCOAL KETTLE SERIES

5 YEAR | PRO AIR CONTROL SYSTEM
+5 YEAR 50% PARTS COVERAGE

PRO Air Control Systems are warranted for full replacement for 5 years. Afterward replacement parts are available for 50% off the retail price for the remainder of the warranty period.

5 YEAR | PORCELAINIZED CAST IRON COOKING GRIDS REPLACEMENT
+5 YEAR 50% PARTS COVERAGE

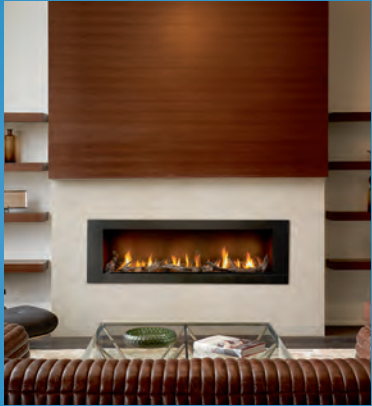
Porcelain-coated cast iron cooking grids are warranted for full replacement for 5 years. Afterward replacement parts are available for 50% off the retail price for the remainder of the warranty period.

3 YEAR | CHROME PLATED COOKING GRIDS
+7 YEAR 50% PARTS COVERAGE

Chrome Plated Cooking Grids are warranted for full replacement for 3 years. Afterward replacement parts are available for 50% off the retail price for the remainder of the warranty period.

NAPOLEON

CELEBRATING OVER 40 YEARS OF HOME COMFORT PRODUCTS



Wolf Steel (UK) Ltd
The Old Grain Store
10-12 Home farm
Meriden Road, Berkswell
CV7 7SL, United Kingdom

Phone: 01676 522788
info@napoleongrills.co.uk
facebook.com/Napoleongrillsuk

www.napoleon.com

Authorised Dealer

